



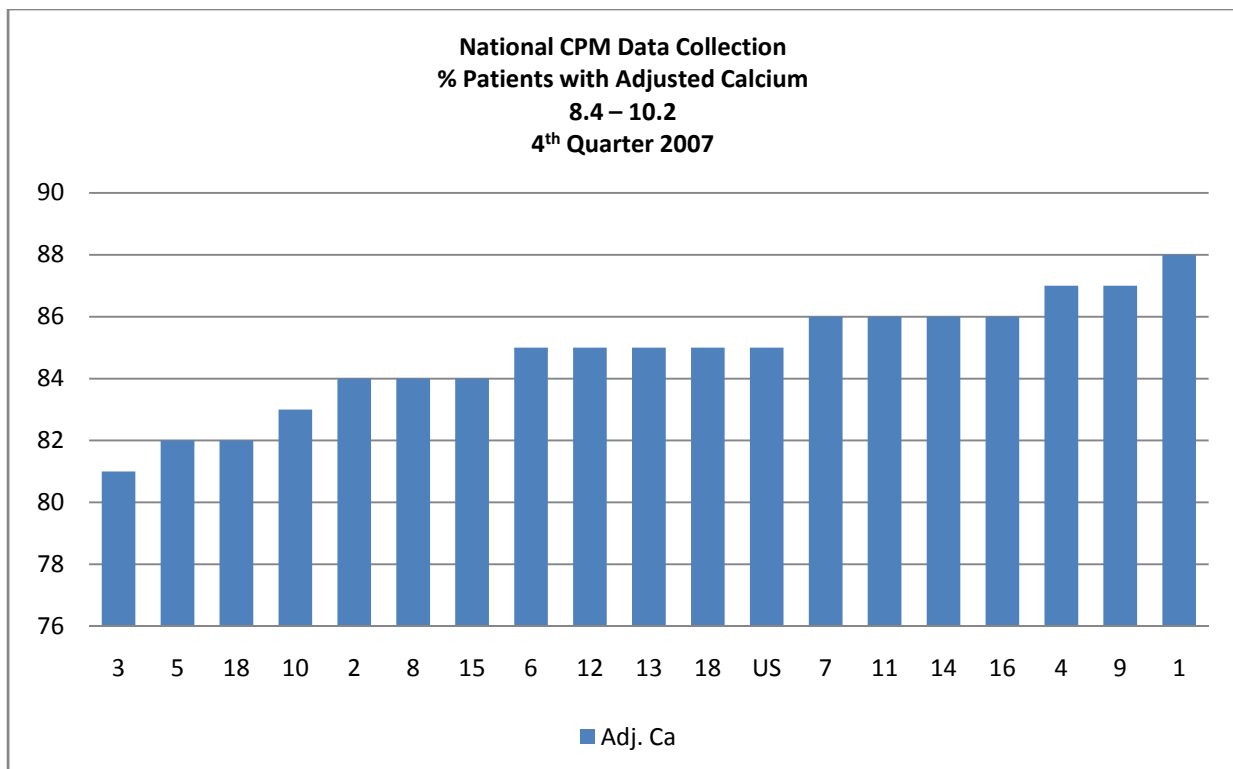
2009 Mineral Metabolism Management Goals

a. Hemodialysis –

- All patients measured for calcium and phosphorus every month $\geq 75\%$ of hemodialysis patient population will have a Ca/PO Product of $< 55 \text{ mg}^2/\text{dL}^2$
- All patients will be measured for “intact” PTH quarterly
- (K/DOQI range 150-300 pg/mL)

b. Peritoneal Dialysis –

- All patients measured for calcium and phosphorus every month of PD clinic visit
- $\geq 75\%$ of peritoneal dialysis patient population will have a Ca/PO_4 Product of $< 55 \text{ mg}^2/\text{dL}^2$
- All patients will be measured for “intact” PTH quarterly
- (K/DOQI range 150-300 pg/mL)



National CPM Data Collection
% Patients with Mean Phosphorus
3.5 – 5.5 - 4th Quarter 2007

