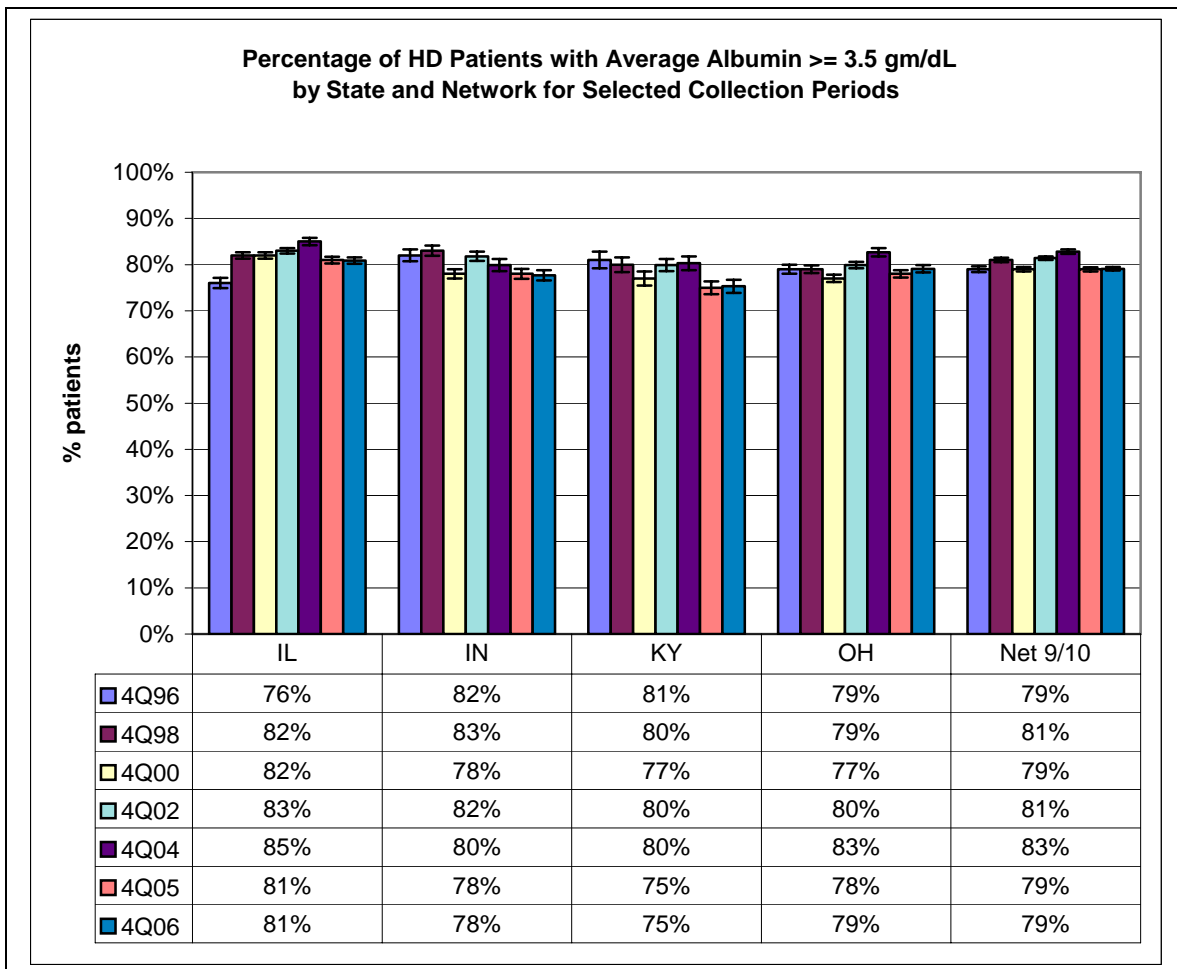




2008 Nutrition Goals (Albumin)

- A stabilized serum albumin equal to or greater than the lower limit of the normal range (approximately 3.5 g/dl for the bromcresol green method) is the outcome goal
- All hemodialysis patients measured for nutrition every month
- All peritoneal dialysis patients measured for nutrition every month of PD clinic visit



**Percentage of PD Patients with Average Albumin \geq 3.5 gm/dL
by State and Network 9/10 for Selected Collection Periods**

