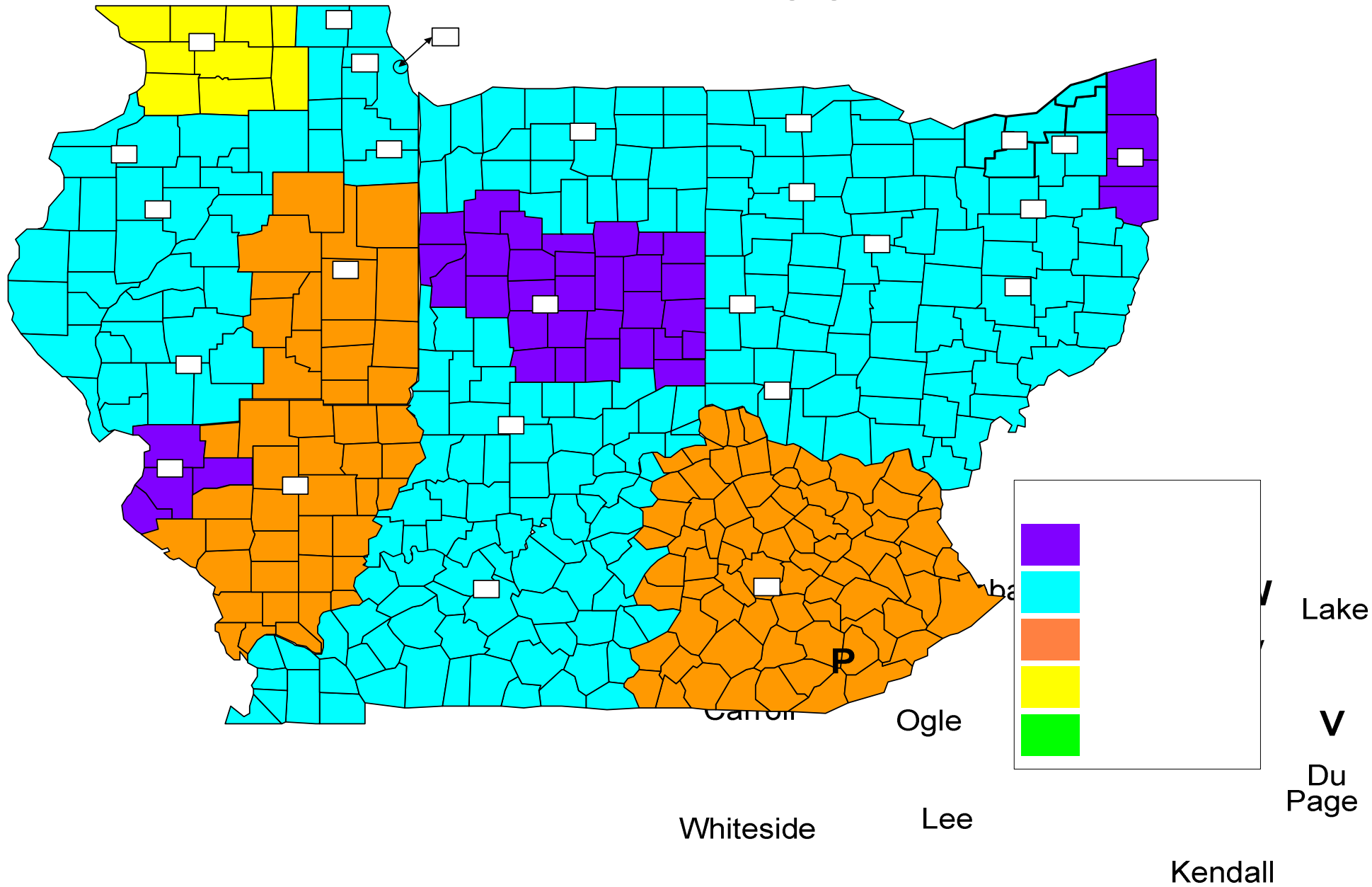


Governmental policy and impact on quality of care Vascular access

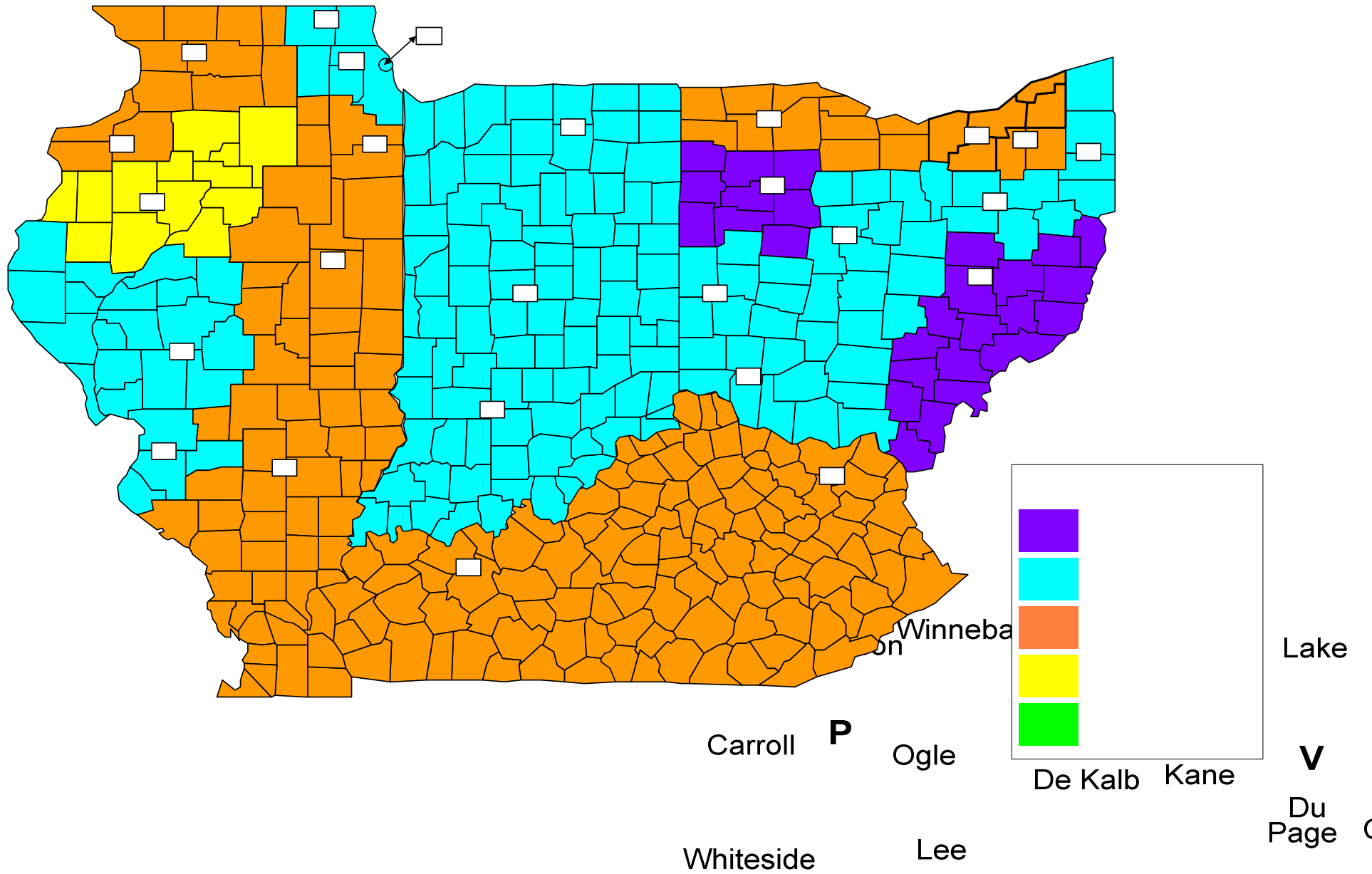
Overview

- Current state of access
- Review KDOQI guidelines
- Review FFBI goals
- Review the status of the National Quality Forum clinical performance measures

Network Prevalent Fistula Rates December 2007



Network Prevalent Catheter Rates December 2007



NKF-DOQI

- Dialysis outcomes quality initiative
- Series of clinical practice guidelines in five areas of dialysis care published by NKF beginning in 1997
- Expanded in 2000 to include all phases of kidney disease and dysfunction
- Renamed K/DOQI
 - Kidney disease outcomes quality initiative

K/DOQI

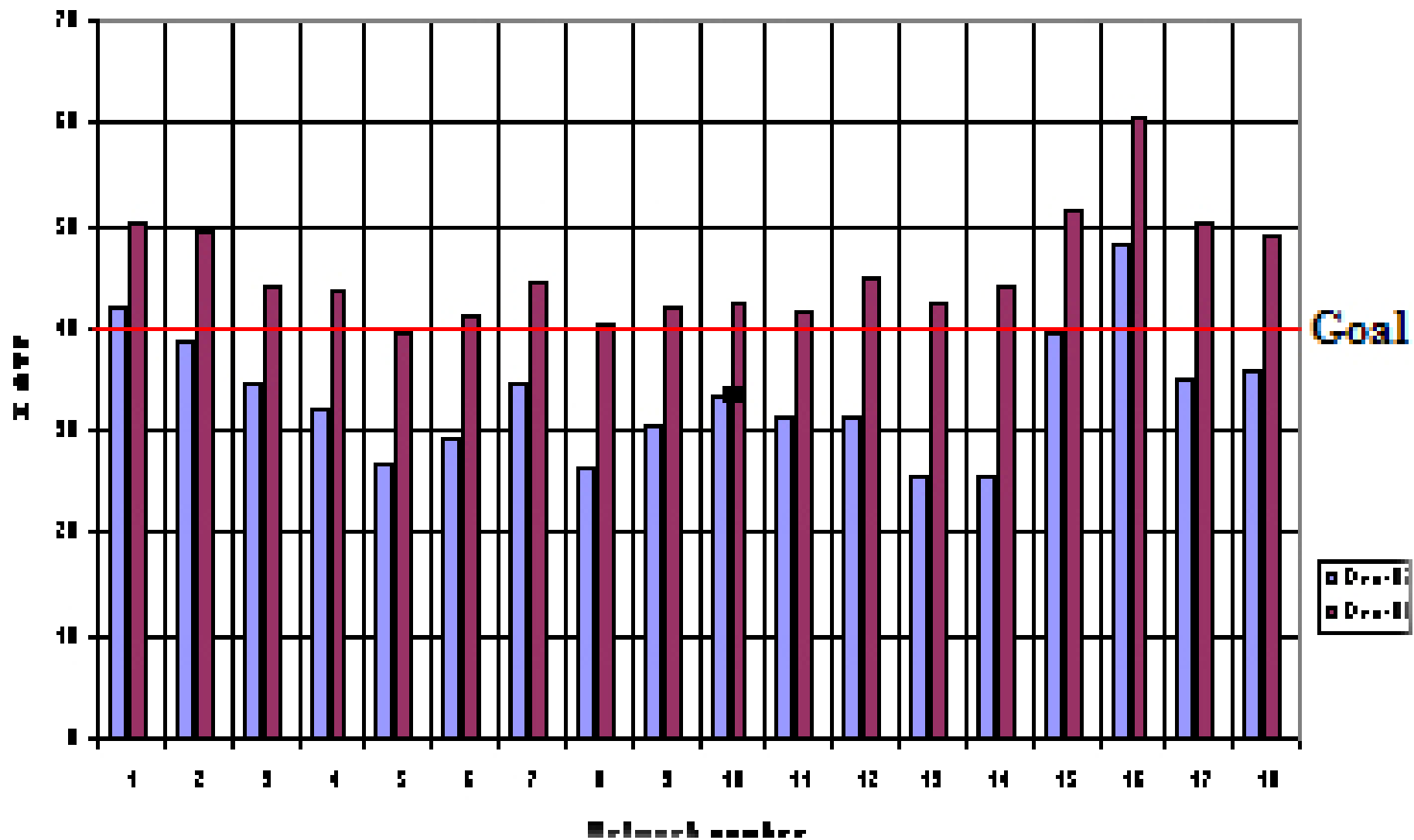
- Utilize evidence based clinical practice guidelines and clinical practice recommendations
- Vascular access guidelines adopted in 2000
 - 50% avf in incident HD patients
 - 40% avf in prevalent HD patients
- Vascular access guidelines updated in 2006
 - 65% avf in prevalent HD patients
 - <10% catheters for permanent access

NVAII

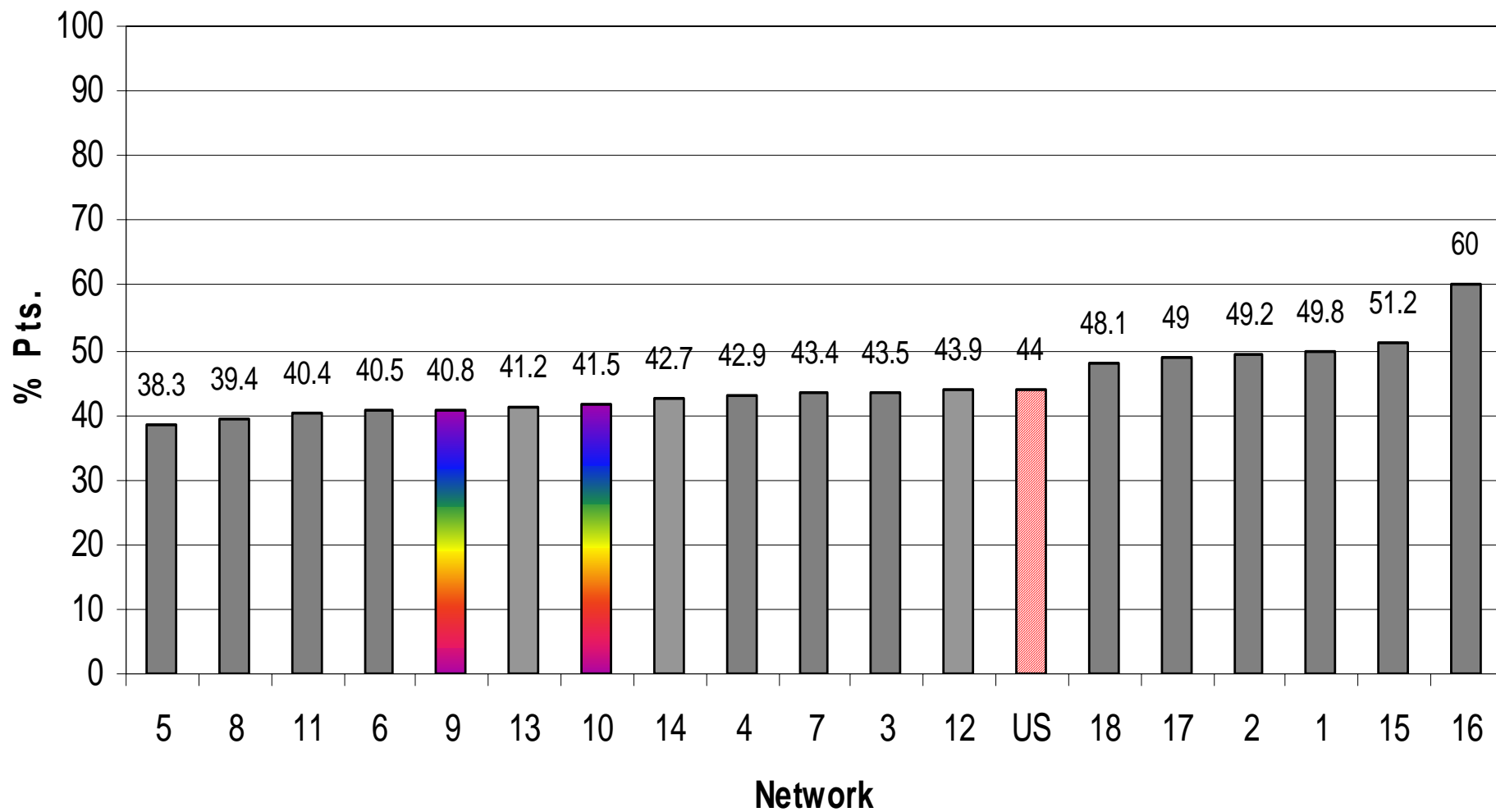
- 2003 National vascular access improvement initiative
- Coalition of CMS, ESRD networks, and key providers with principle goal of reaching or exceeding the CPM and K/DOQI avf incidence and prevalence
- Using key “change concepts”, focused on clinical and organizational changes that can be adapted and applied locally.

ESRD Network Results: 2002-2006

Prevalent Hemodialysis



Percent of Patients with AVF by Network Sept 2006



FFBI

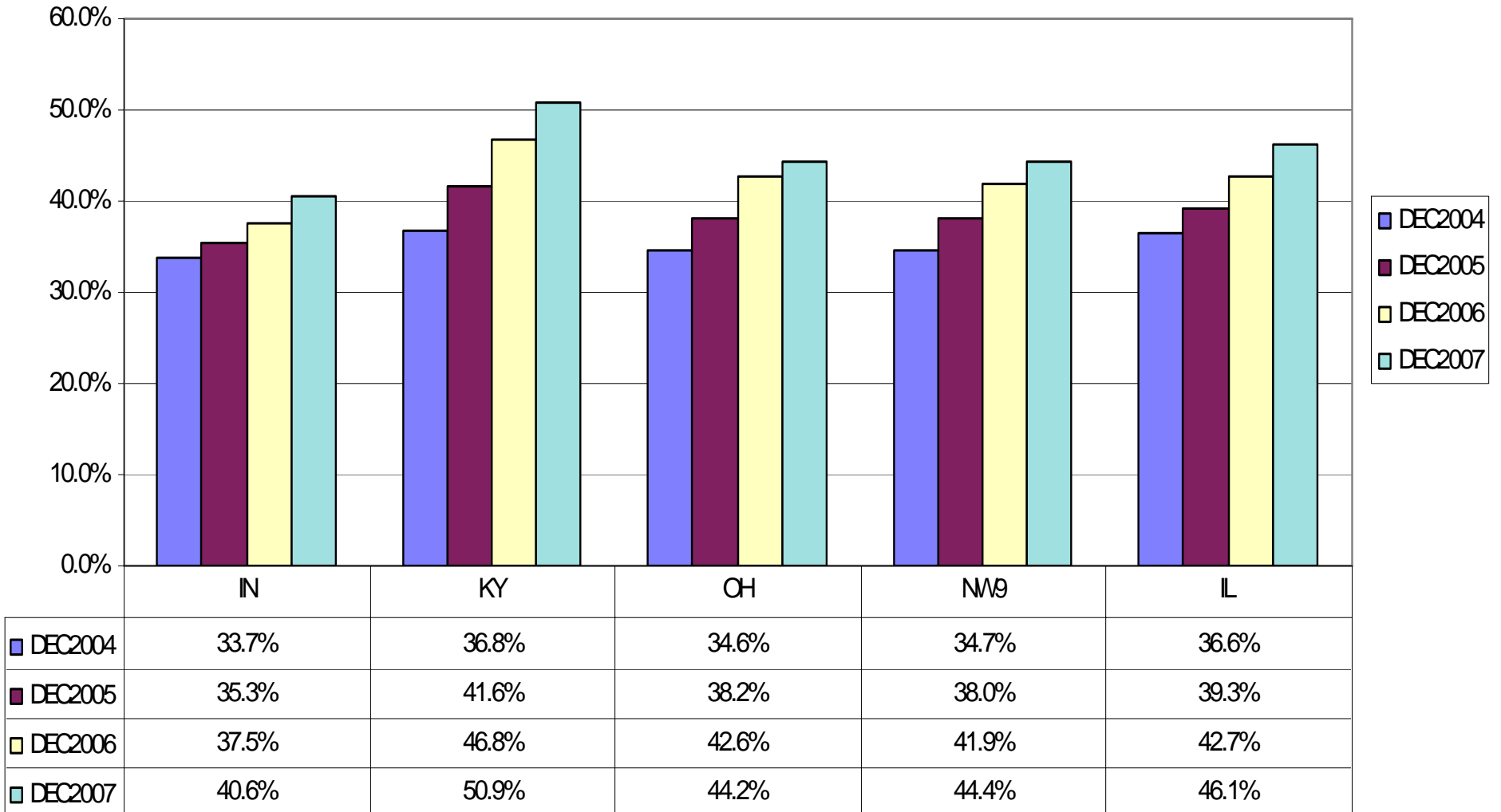
- As a result of the efforts of the NVAII, by August of 2005 the national avf prevalence had reached the goal of 40%
 - A 27% increase from the start in 2003
- In late 2005 CMS announced the Fistula First Breakthrough Initiative with new “stretch” goal of 66% prevalent avf by 2009
- Hemodialysis access continues to be a significant focus of the Network’s contracted scope of work

Network Fistula Goals 2006 – 2009

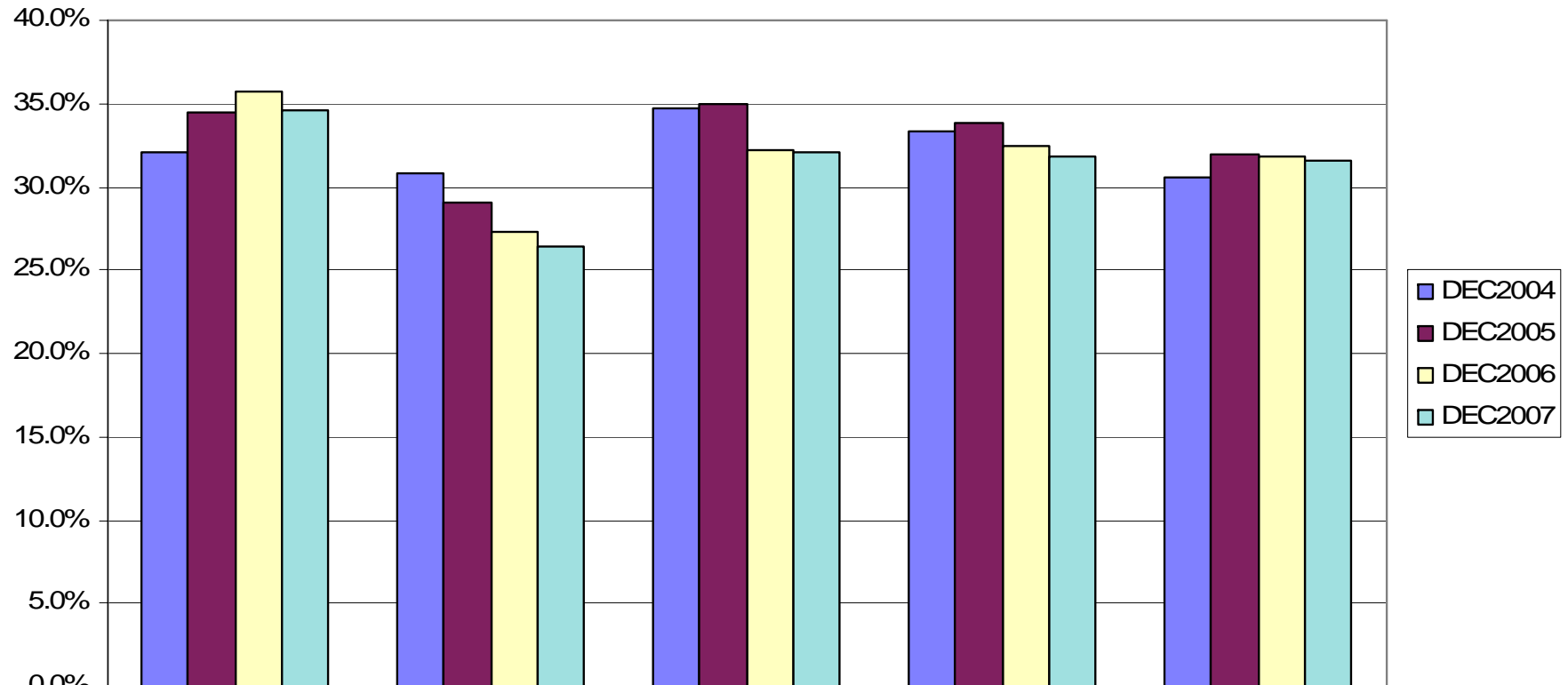
Prevalent AV fistula goals for each year in each Network

Network 9		Network 10	
Dec '06 rate =	42.0%	Dec '06 rate =	42.6%
2007 Goal =	50.0%	2007 Goal =	50.0%
2008 Goal =	58.0%	2008 Goal =	58.0%
2009 Goal =	66.0%	2009 Goal =	66.0%

% Prevalent Patients Using a Fistula by State & Network

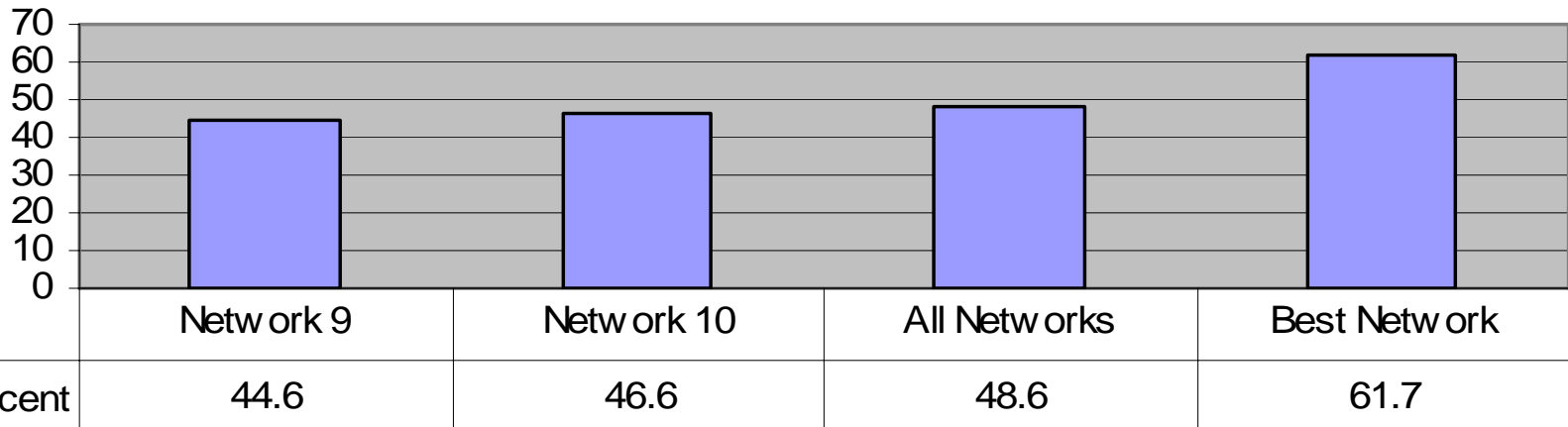


% Prevalent Patients Using a Catheter by State & Network



	IN	KY	OH	NW9	IL
■ DEC2004	32.1%	30.8%	34.7%	33.3%	30.5%
■ DEC2005	34.5%	29.1%	35.0%	33.9%	31.9%
■ DEC2006	35.7%	27.3%	32.2%	32.4%	31.9%
■ DEC2007	34.6%	26.5%	32.1%	31.8%	31.6%

Percent of Prevalent Patients Using Fistulas December, 2007



National Quality Forum

- In February 2007 the NQF initiated a project under contract from CMS to achieve consensus on a set of quality measures for ESRD care for the purpose of public reporting and quality improvement
- Proposed “national voluntary consensus standards” are currently under review
- 24 standards proposed in 7 topic areas
 - Vascular access is one area
 - Focus on both outcomes and process issues

Purpose

- Evaluate ESRD care quality
- Improve ESRD care
- Serve as mechanism for public accountability
- Identify priority areas for research
- Facilitate benchmarking and sharing of best practices

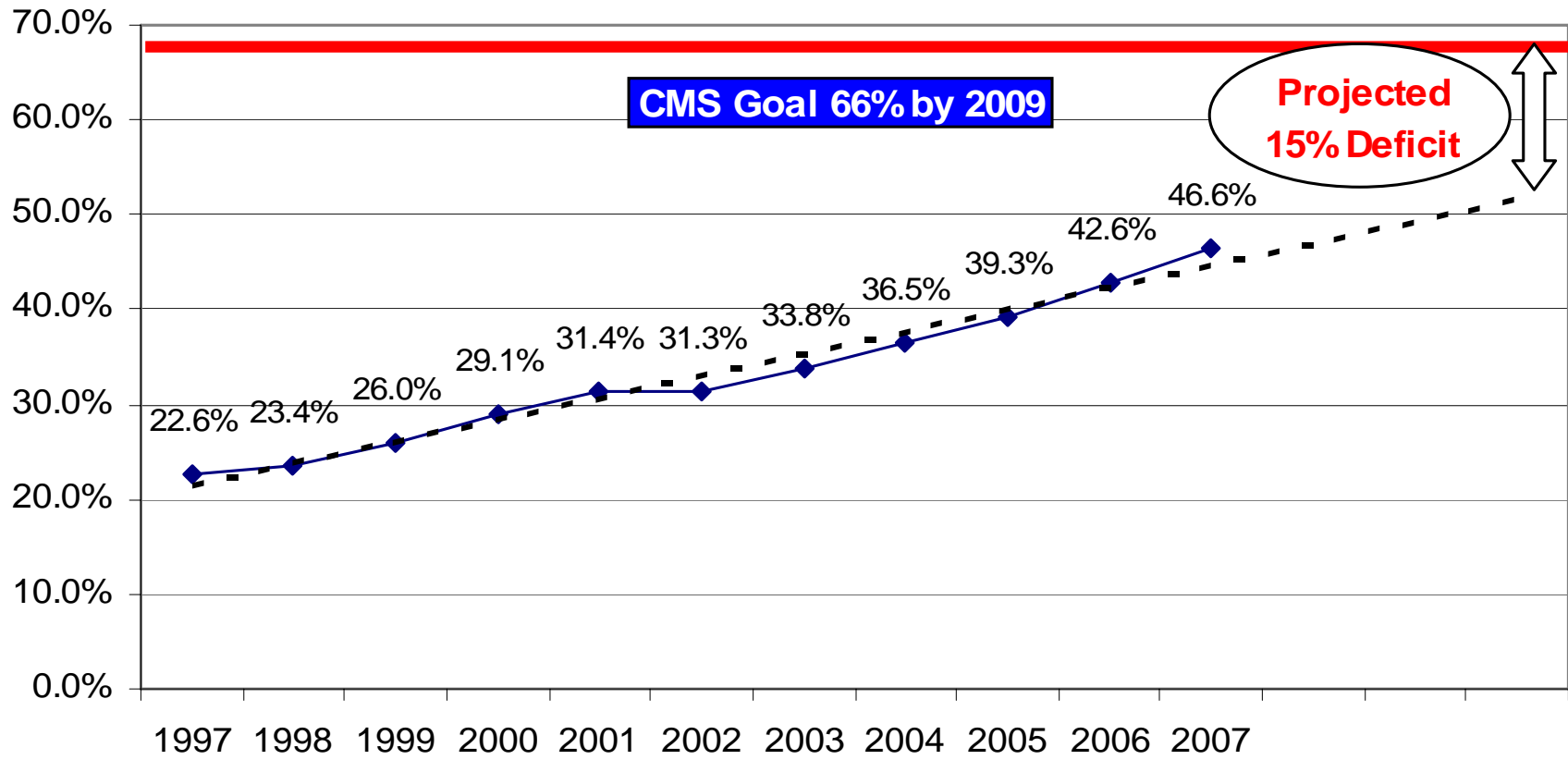
Vascular access standards

- Facility level
 - Percent patients with catheter >90 days
 - Percent patients with functional avf
 - In use with 2 needles
- Physician level
 - Percent patients with functional avf or who have been seen by surgeon for perm. access
 - Percent patients with catheter >90 days seen by surgeon for perm. access
 - Percent patients with CKD 4-5 undergoing perm. access surgery who receive avf

Voluntary consensus standards reporting results

- These will be the publicly available measures of quality for facilities and physicians
- These could be part of performance based payments
- These reinforce the clear goal of CMS
 - >66% prevalent avf
 - <10% prevalent catheters

Network 10 Prevalent Fistula Rate



Network 9 Prevalent Fistula Rate

