

C. CMS National CPM Project.

The CMS National CPM Project has been suspended until CROWNWeb is available to all facilities in the US. ESRD Networks are using the Electronic Laboratory Data (ELab) Collection to evaluate facility clinical outcomes in order to develop goals and identify opportunities for quality improvement initiatives.

All 18 Networks, including Networks 9 and 10, participated in the national Electronic Laboratory Data (ELab) Collection during the fourth quarter of 2009. One hundred percent of in-center hemodialysis and peritoneal dialysis patients were collected from dialysis providers in the United States for both adult and pediatric patients.

In the fourth quarter of 2009, independent hemodialysis and peritoneal dialysis facilities were

asked to voluntarily submit to the Network lab data via Excel spreadsheets. Large dialysis organizations submitted lab data via data download to Network 11. Feedback reports describing the data collected are being prepared by ESRD Network 11 and will be distributed in spring/summer 2010. The reports compare facility-specific outcomes to state and national outcomes. Aggregate information will be placed on the Network 9/10 Web site and the data will be reviewed by the MRB and used to identify topics for quality improvement projects. The fourth quarter lab dataset is reviewed and analyzed each year comparing Networks 9/10 outcomes to those of other Networks and the US.

Figure 25 displays how Network 9 and Network 10 ranked for adult in-center hemodialysis clinical outcomes among the other 16 Networks in the United States for the past three years.

Figure 25 National Ranking for Network 9/10

4Q07-4Q09 Data for Adult (≥ 18 years)

In-center Hemodialysis Patients

Source: Electronic Laboratory Data (ELab) Project

ESRD Network 11& CMS^{4th} Quarter 2007, 2008, & 2009

Clinical Characteristic	Network 9			Network 10		
	4Q07	4Q08	4Q09	4Q07	4Q08	4Q09
Percentage Patients with Average:						
Kt/V ≥ 1.2	4	7	10	15	15	12
URR $\geq 65\%$	8	9	9	12	11	8
Hgb 10-12gm/dL	8	6	4	14	10	10
Hgb ≥ 13 gm/dL	16	14	10	11	8	13
Ferritin ≥ 100 ng/mL	10	7	6	2	1	1
TSAT $\geq 20\%$	15	15	14	10	8	7
Albumin ≥ 3.5 gm/dL	17	18	17	13	10	9
Albumin ≥ 4.0 gm/dL	16	16	17	13	13	7
Calcium 8.4-10.2 mg/dL	8	8	13	11	10	9
Phosphorus 3.5-5.5 mg/dl	10	12	10	9	7	9
Percentage Prevalent Patients: AV Fistula in use	16	16	18	12	13	12
Ranking scale=#1 best, #18 worst						

Figures 26 - 34 compare and rank the 18 Networks and the United States in regard to several adult hemodialysis quality indicators which

were collected and compared in the Elab Project National 2009 and Trends Report.

Figure 26: Percent of adult in-center hemodialysis patients receiving dialysis with a mean spKt/V ≥ 1.2 by Network October-December 2009
2009 Elab Data Collection

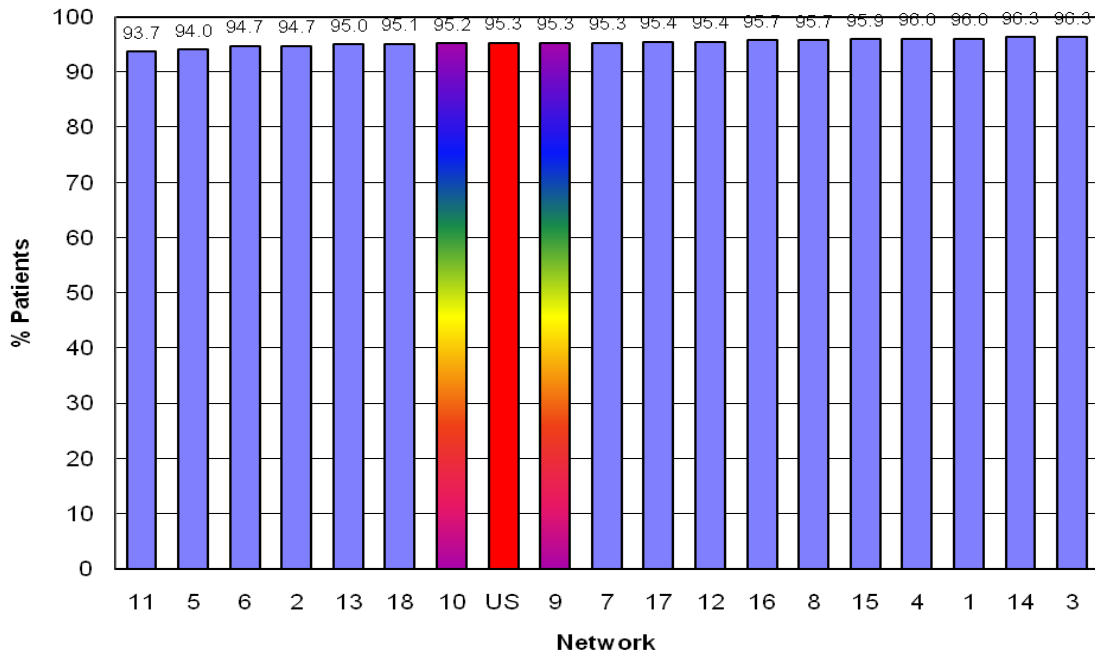


Figure 27: Percent of adult in-center hemodialysis patients receiving dialysis with a mean URR $\geq 65\%$ by Network October-December 2009
2009 Elab Data Collection

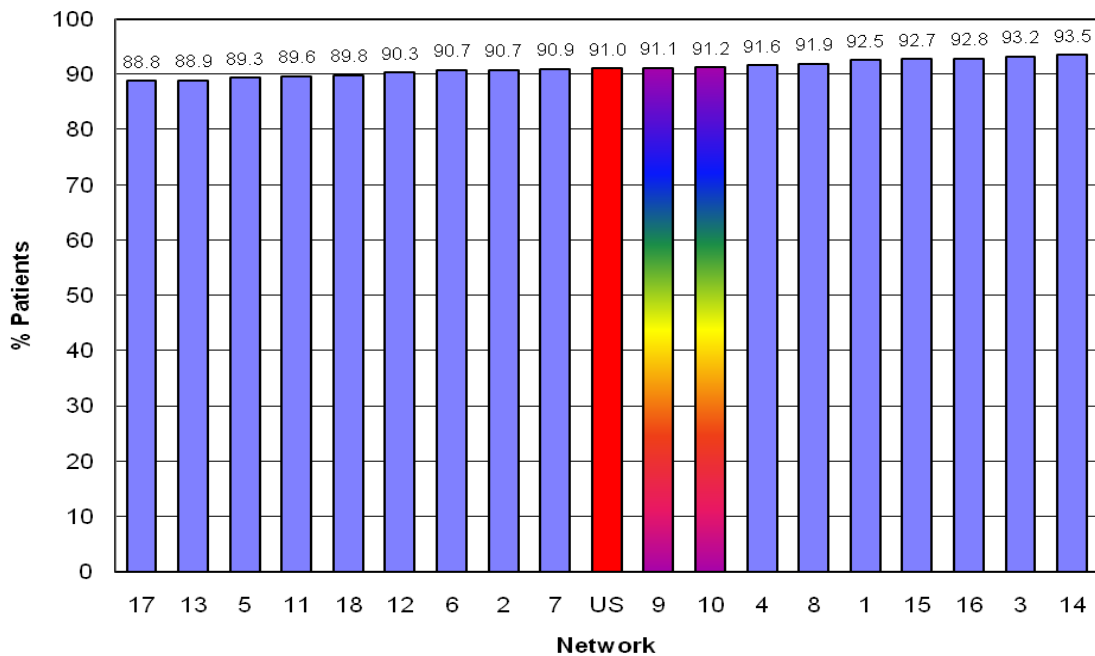


Figure 28: Percent of adult in-center hemodialysis patients with mean Hgb 10-12 gm/dL by Network October-December 2009
2009 Elab Data Collection

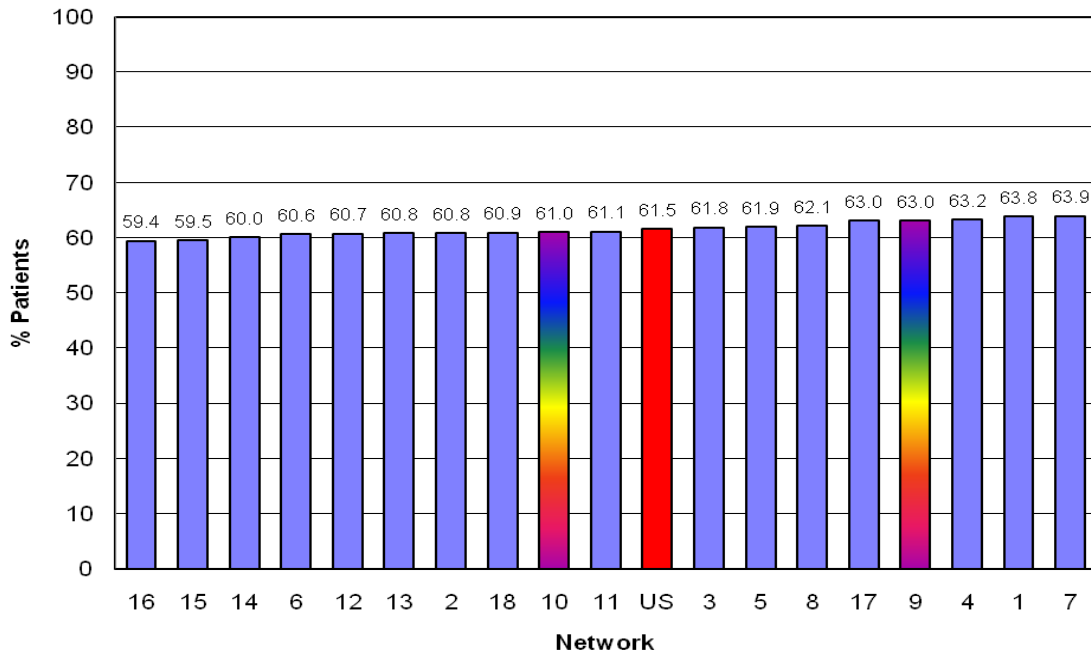


Figure 29: Percent of adult in-center hemodialysis patients with mean Hgb \geq 13 gm/dL by Network October-December 2009
2009 Elab Data Collection

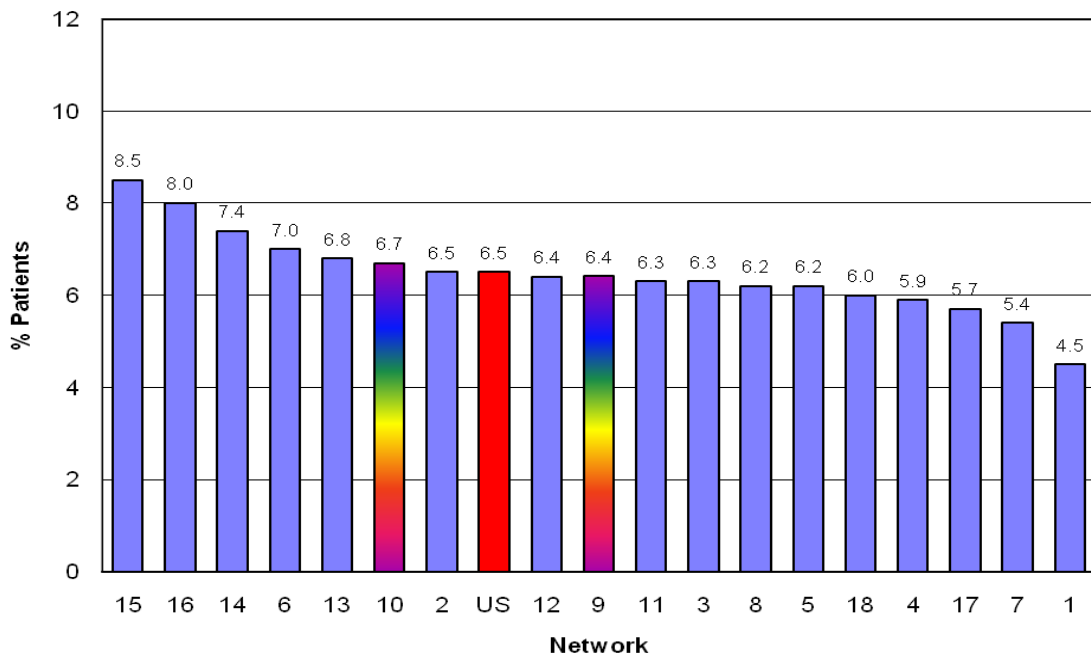


Figure 30: Percent of adult in-center hemodialysis patients with mean Serum Albumin ≥ 3.5 BCG/3.2 BCP gm/dL by Network October-December 2009
2009 Elab Data Collection

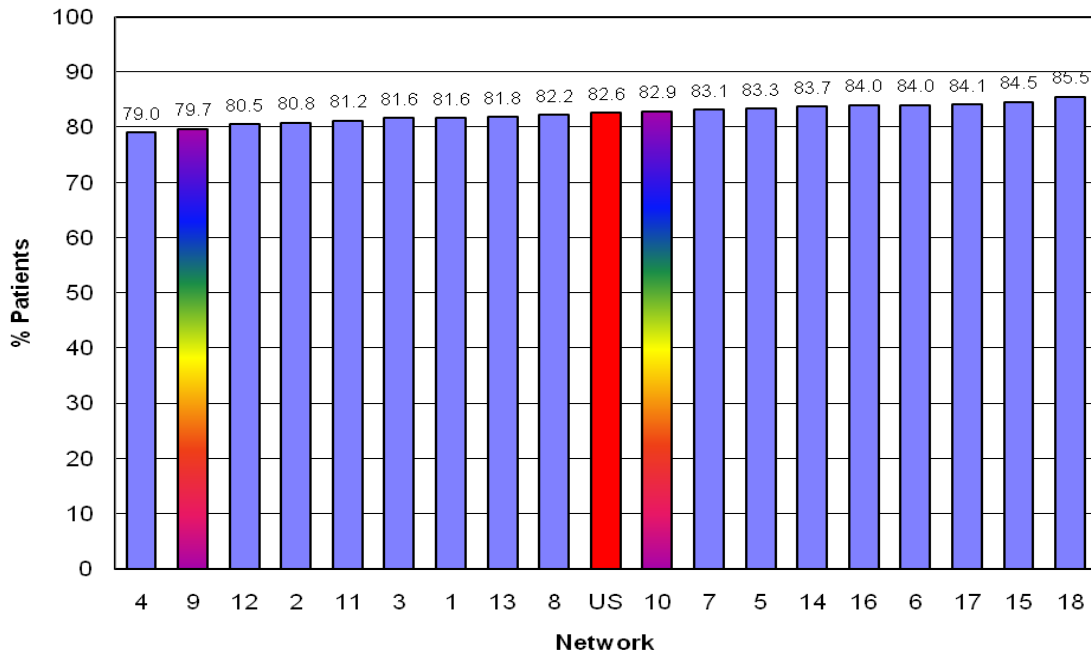


Figure 32: Percent of adult in-center hemodialysis patients with Adjusted Calcium 8.4 - 10.2 gm/dL by Network October-December 2009
2009 Elab Data Collection

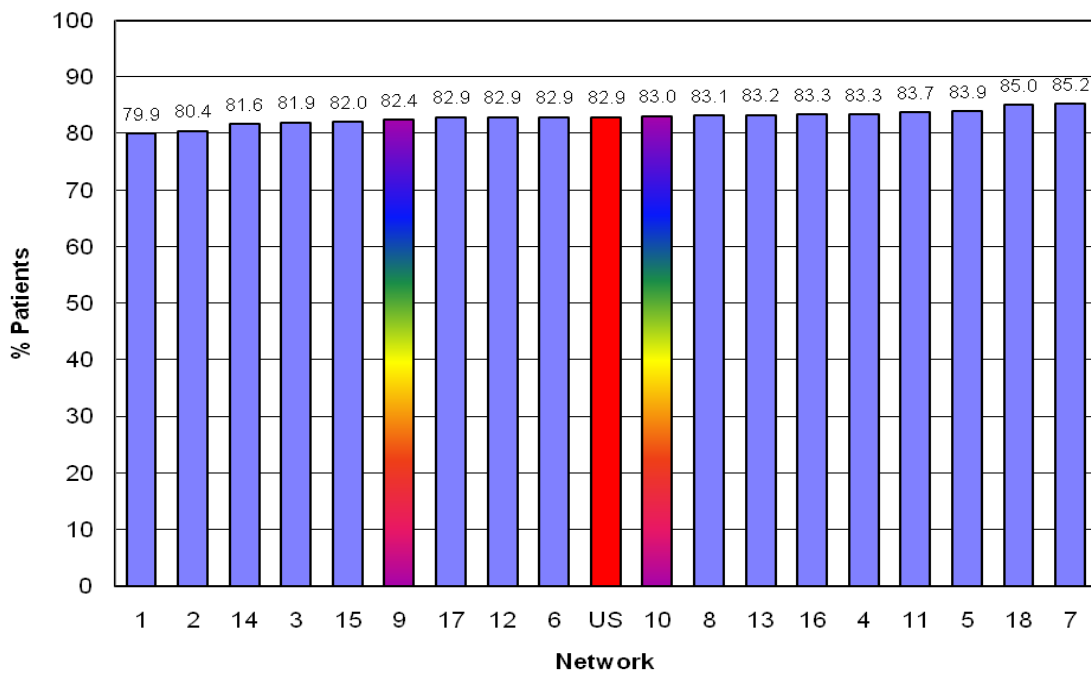


Figure 33: Percent of adult in-center hemodialysis patients with Mean Phosphorus 3.5 - 5.5 gm/dL by Network October-December 2009
2009 Elab Data Collection

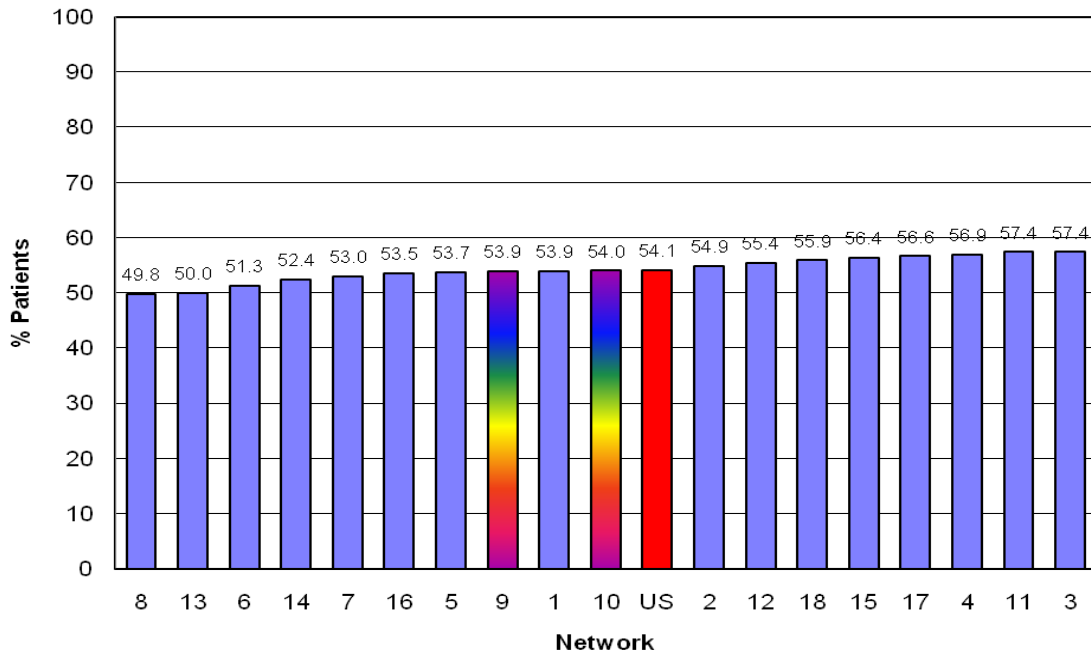


Figure 34: Percent of prevalent adult in-center hemodialysis patients using an AV Fistula by Network
December 2009

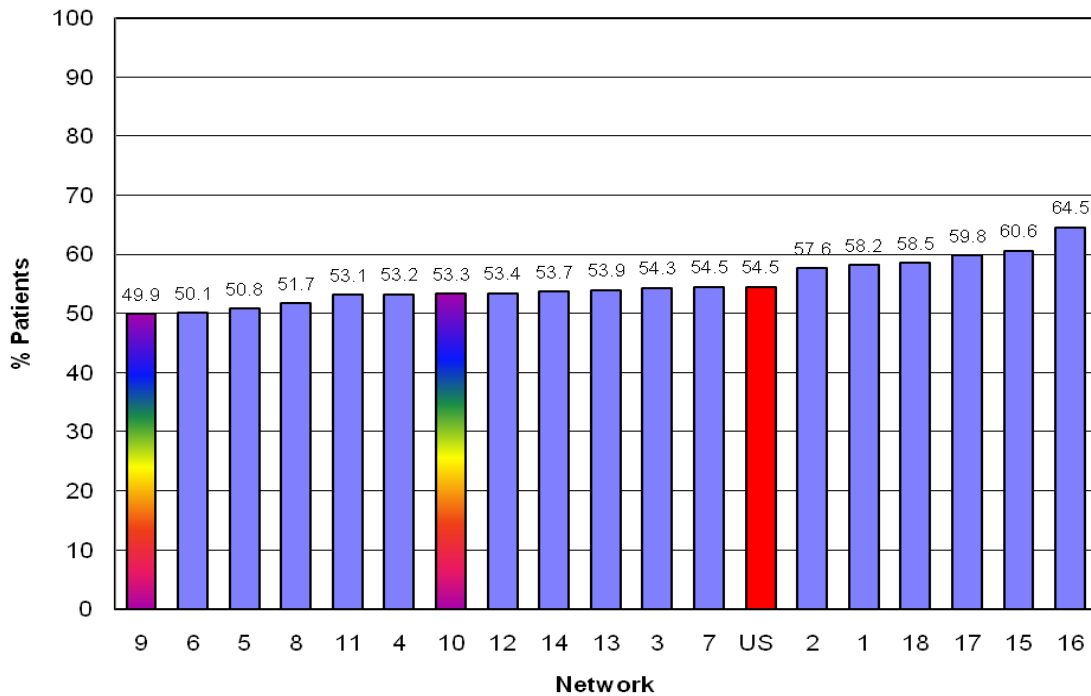


Figure 35 displays how Network 9 and Network 10 ranked for adult peritoneal dialysis clinical outcomes

among the other 16 Networks in the United States for the past three years.

Figure 35 National Ranking for Network 9/10 4Q07-4Q09 Data for Adult (≥ 18 years) Peritoneal Dialysis Patients Source: Electronic Laboratory Data (ELab) Project ESRD Network 11& CMS 4th Quarter 2007, 2008, & 2009						
Clinical Characteristic	Network 9			Network 10		
	4Q07	4Q08	4Q09	4Q07	4Q08	4Q09
Percentage Patients with Average:						
Kt/V ≥ 1.7	6	8	15	12	5	13
CrCl ≥ 60 L/wk	2	7	3	17	2	7
Hgb 10-12m/dL	3	3	6	2	9	9
Hgb ≥ 13 mg/dL	4	8	6	2	3	3
Albumin ≥ 3.5 gm/dL	17	18	10	13	4	16
Albumin ≥ 4.0 gm/dL	16	18	10	8	7	17
Ferritin ≥ 100 ng/mL	14	9	13	10	12	8
TSAT $\geq 20\%$	12	11	12	11	12	16
Calcium 8.4-10.2 mg/dL	6	12	10	15	7	16
Phosphorus 3.5-5.5 mg/dL	5	4	9	4	10	11
Ranking scale=#1 best, #18 worst						

Figure 36 - 43 compare and rank the 18 Networks and the U.S. in regards to several adult peritoneal dialysis

quality indicators that were collected and compared in the Elab Project National 2009 and Trends Report.

Figure 36: Percent of prevalent adult peritoneal dialysis patients with Kt/V ≥ 1.7 by Network October-December 2009
 2009 Elab Data Collection

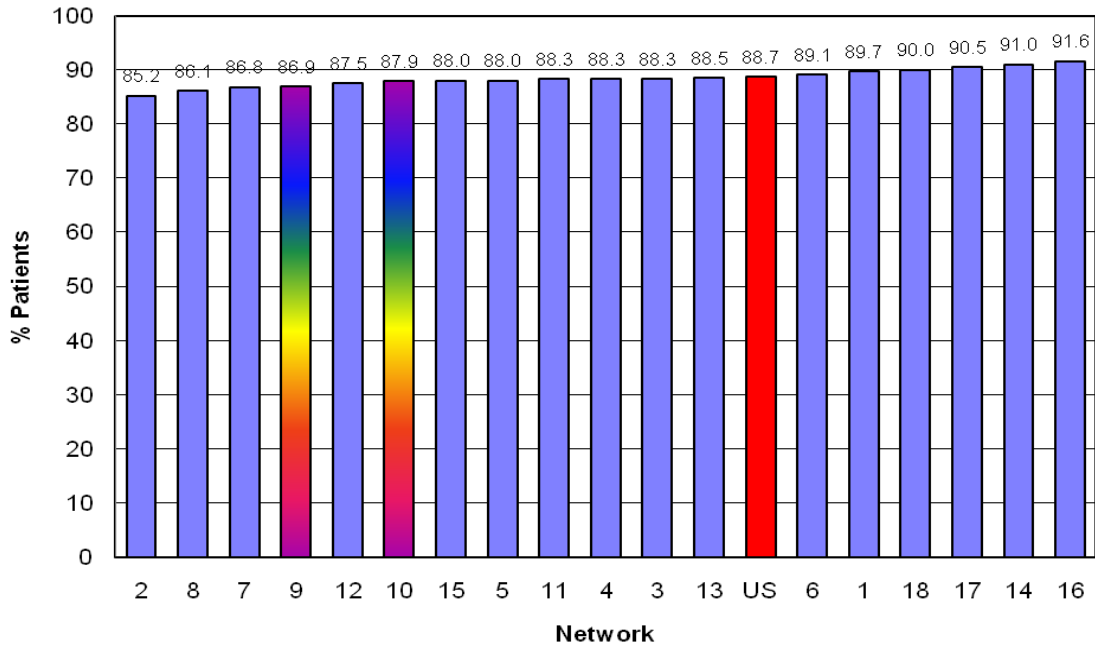


Figure 37: Percent of prevalent adult peritoneal dialysis patients with Creatinine Clearance ≥ 60 L/wk by Network October-December 2009
 2009 Elab Data Collection

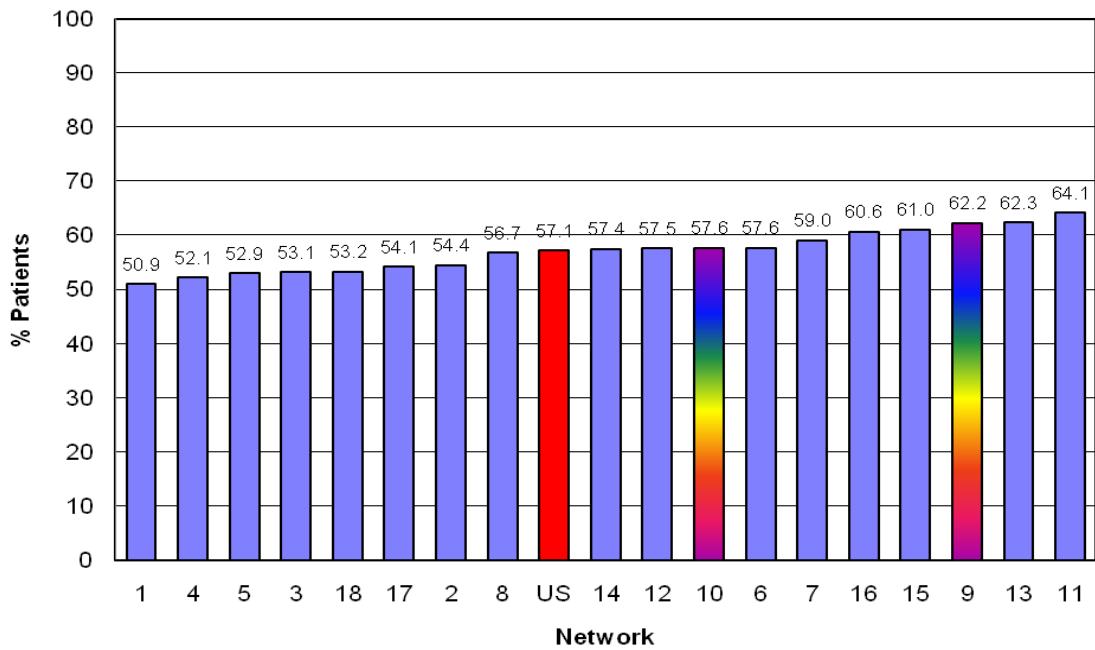


Figure 38: Percent of prevalent adult peritoneal dialysis patients with mean Hgb 10-12 gm/d by Network October-December 2009
2009 Elab Data Collection

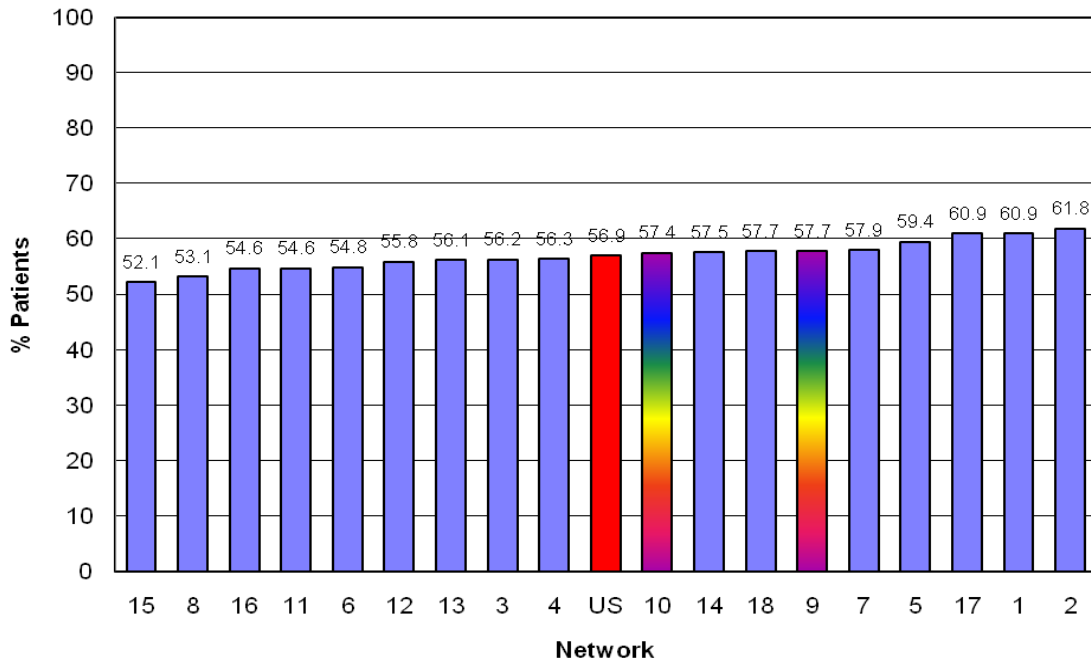


Figure 39: Percent of prevalent adult peritoneal dialysis patients with mean Hgb \geq 13 gm/dL by Network October-December 2009
2009 Elab Data Collection

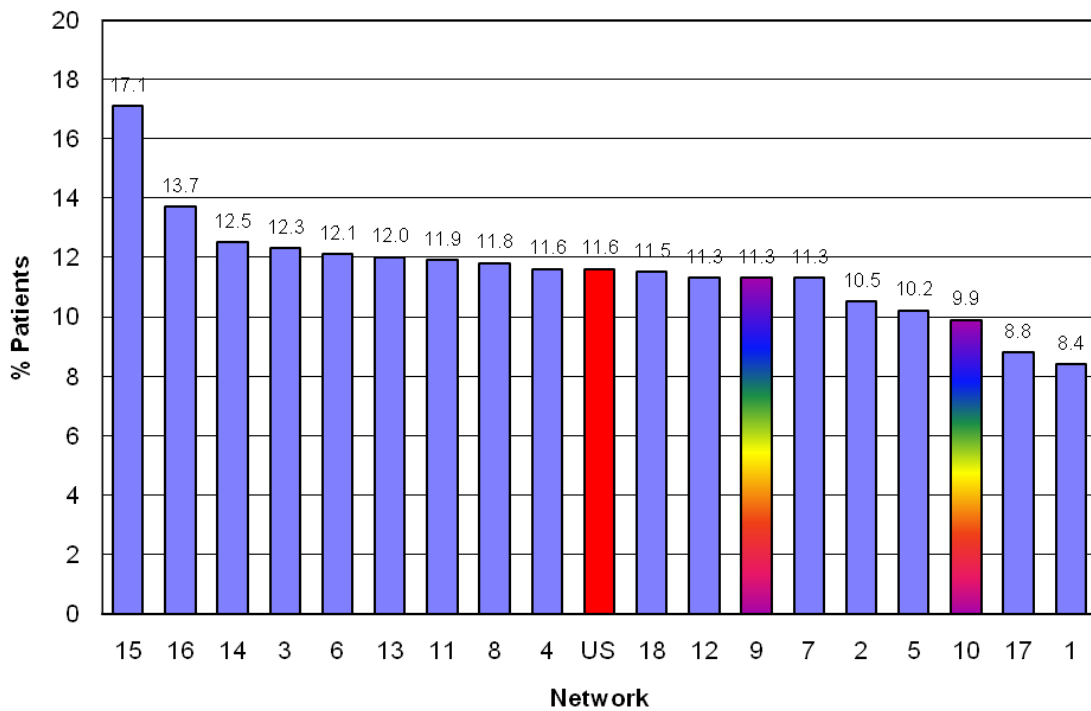


Figure 40: Percent of prevalent adult peritoneal dialysis patients with mean Serum Albumin ≥ 3.5 BCG/3.2 BCP gm/dL by Network October-December 2009
2009 Elab Data Collection

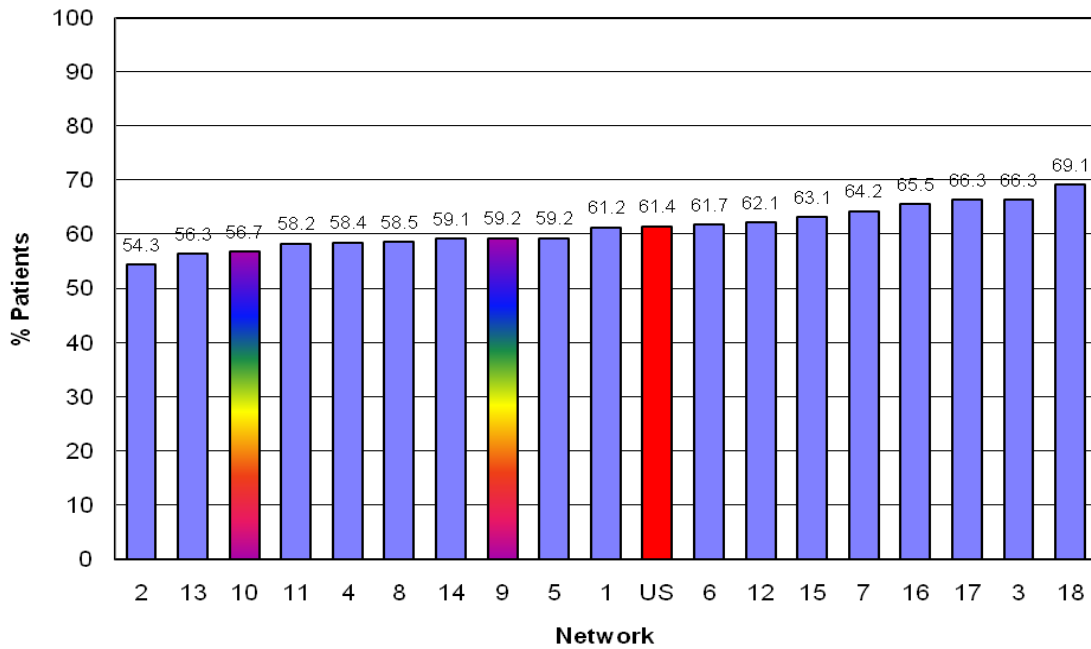


Figure 41: Percent of prevalent adult peritoneal dialysis patients with mean Serum Albumin ≥ 4.0 BCG/3.7 BCP gm/dL by Network October-December 2009
2009 Elab Data Collection

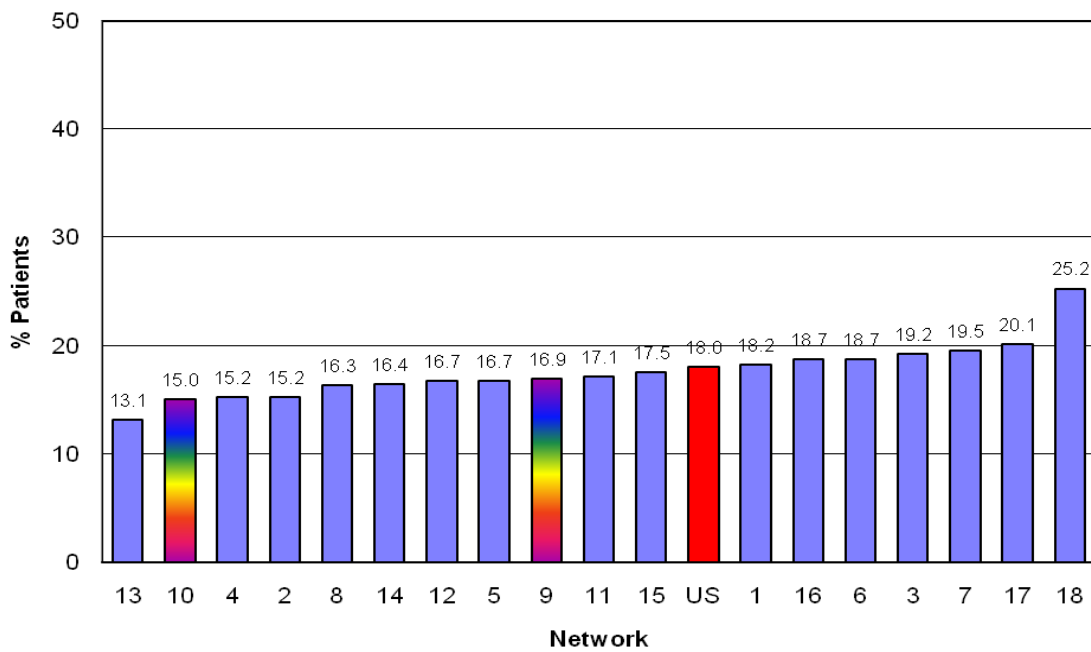


Figure 43: Percent of prevalent adult peritoneal dialysis patients with Mean Phosphorus 3.5 - 5.5 gm/dL by Network October-December 2009
2009 Elab Data Collection

