

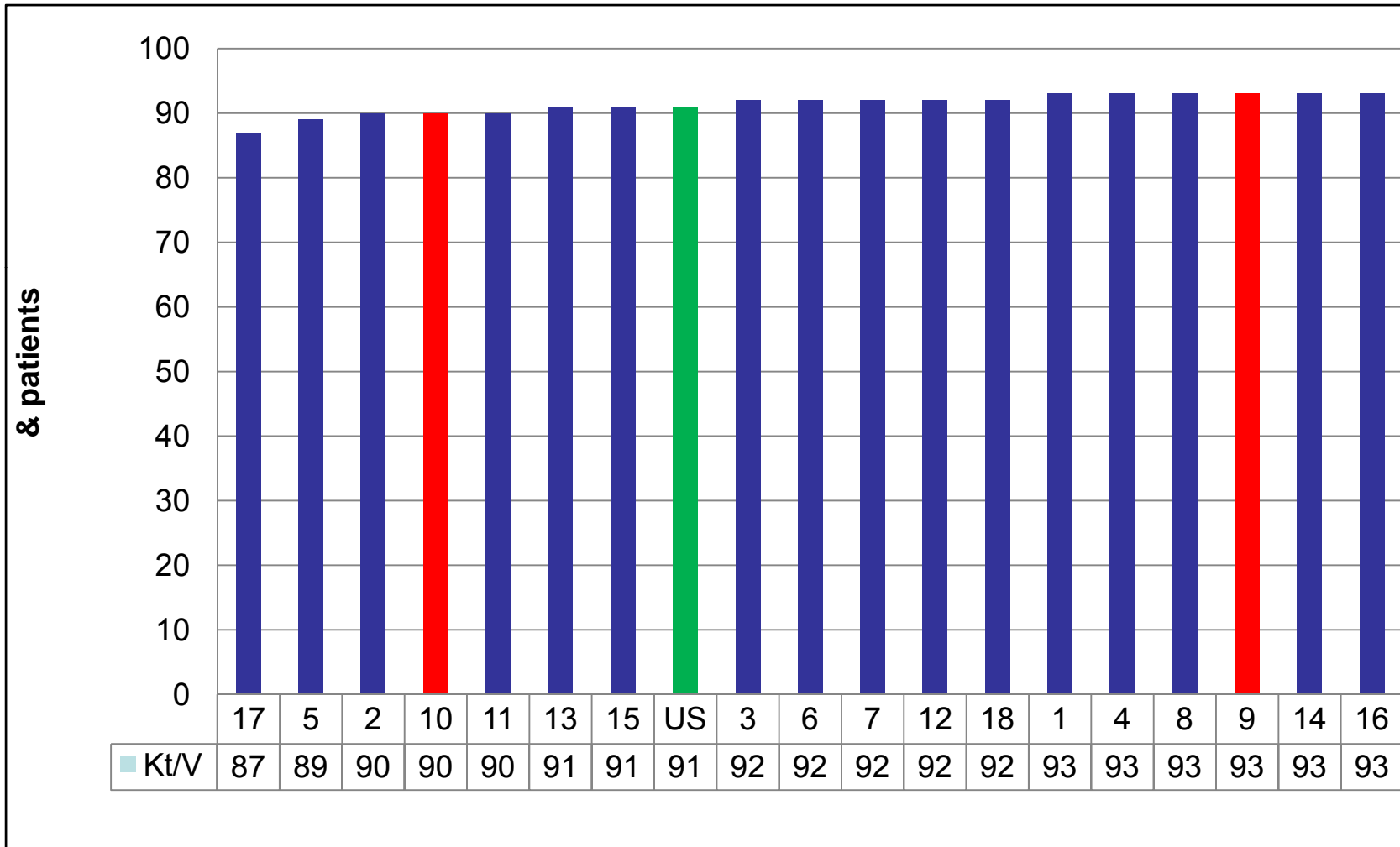
Hemodialysis Adequacy Goal

- $\geq 95\%$ of hemodialysis patient population achieve Kt/V Daugirdas II ≥ 1.2
- $\geq 95\%$ of hemodialysis patient population achieve URR $\geq 65\%$

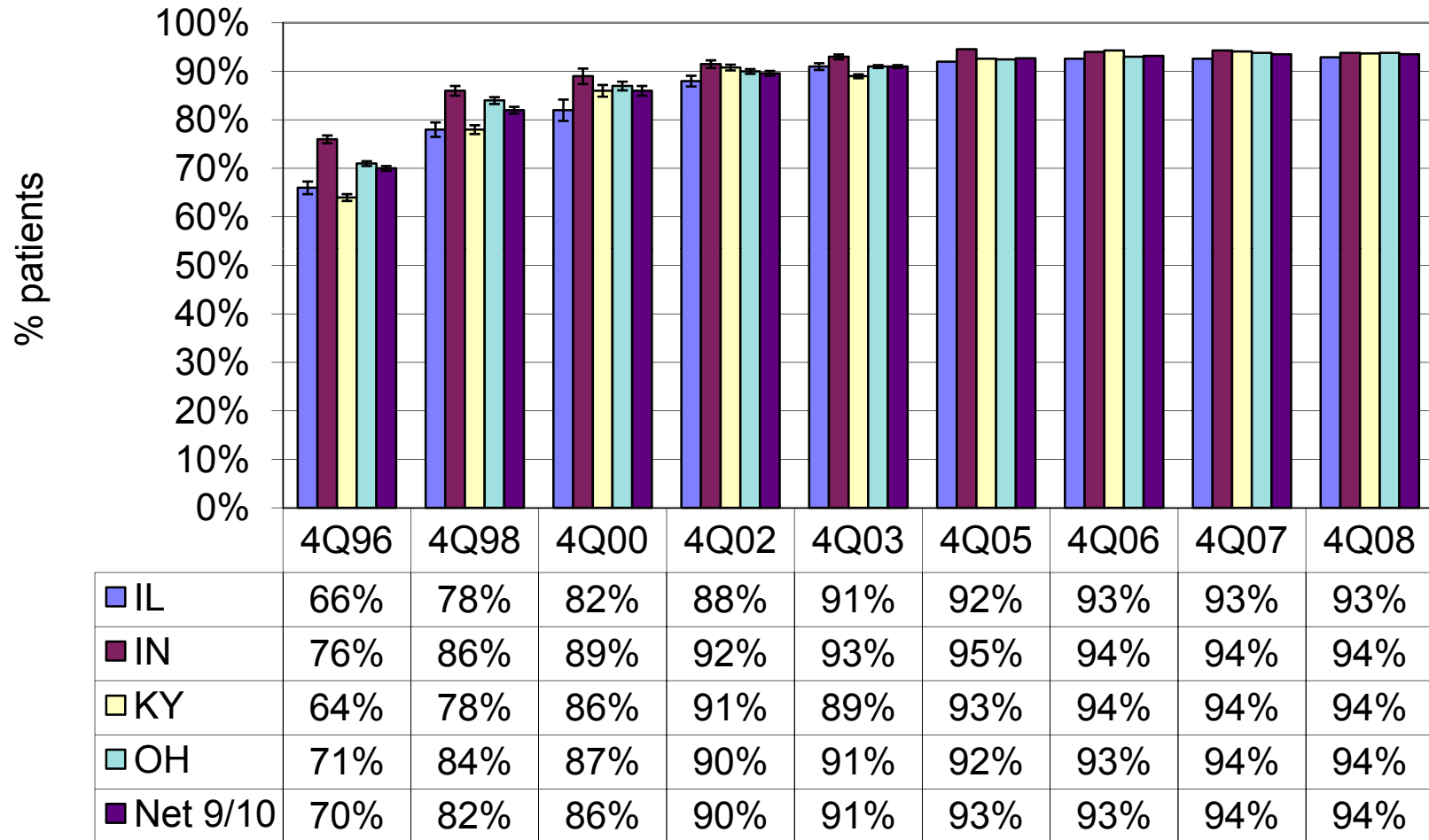
National CPM Data Collection

% Patients with $Kt/V \geq 1.2$

4th Quarter 2007



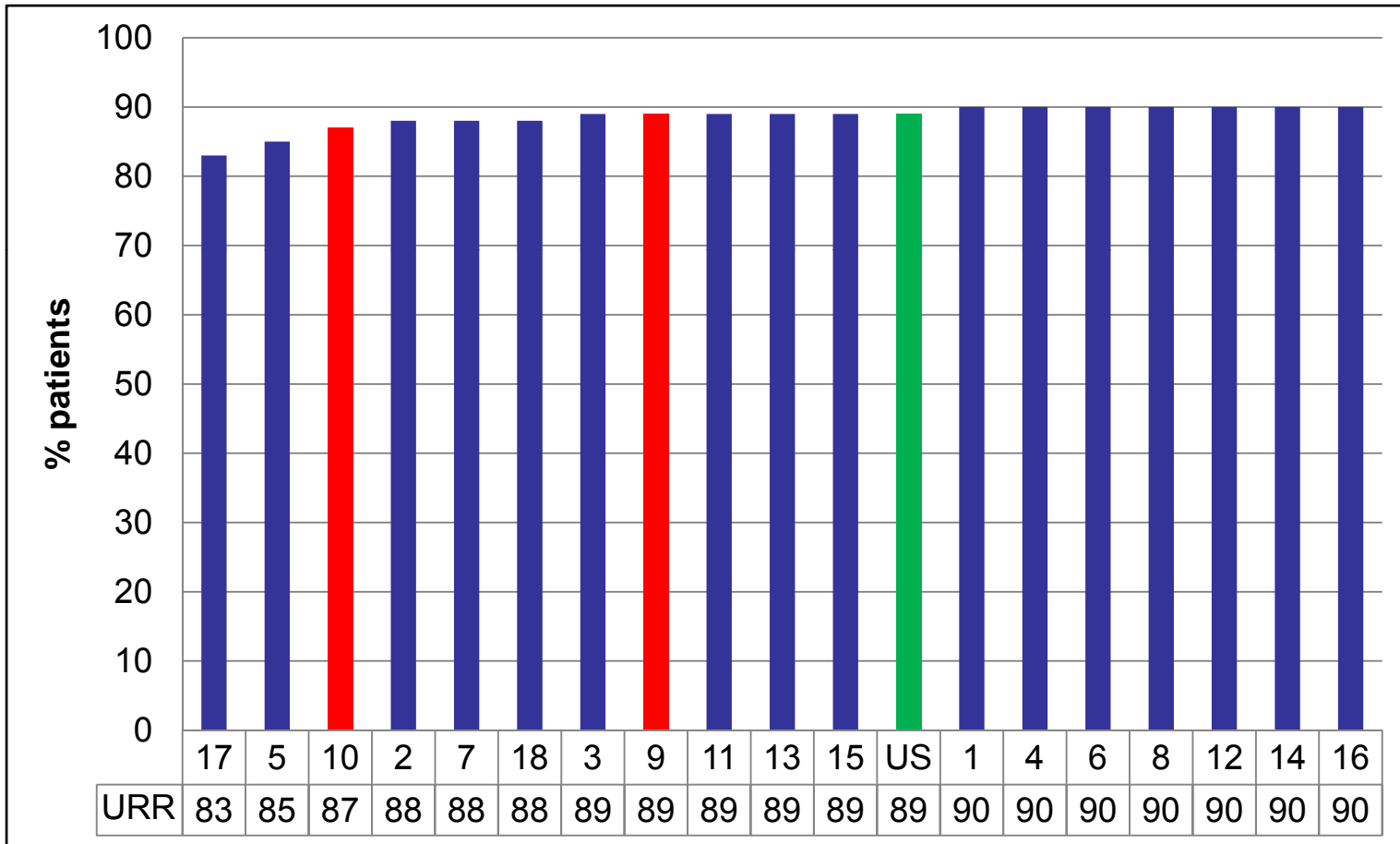
Percentage of HD Patients with Reported Kt/V \geq 1.2
by State and Network 9/10 for Selected Collection Periods



National CPM Data Collection

% Patients with URR \geq 65%

4th Quarter 2007



Anemia Management Goal

Goal has been replaced by –

“A Statement on the Use of ESA in CKD Patients Requiring Dialysis”

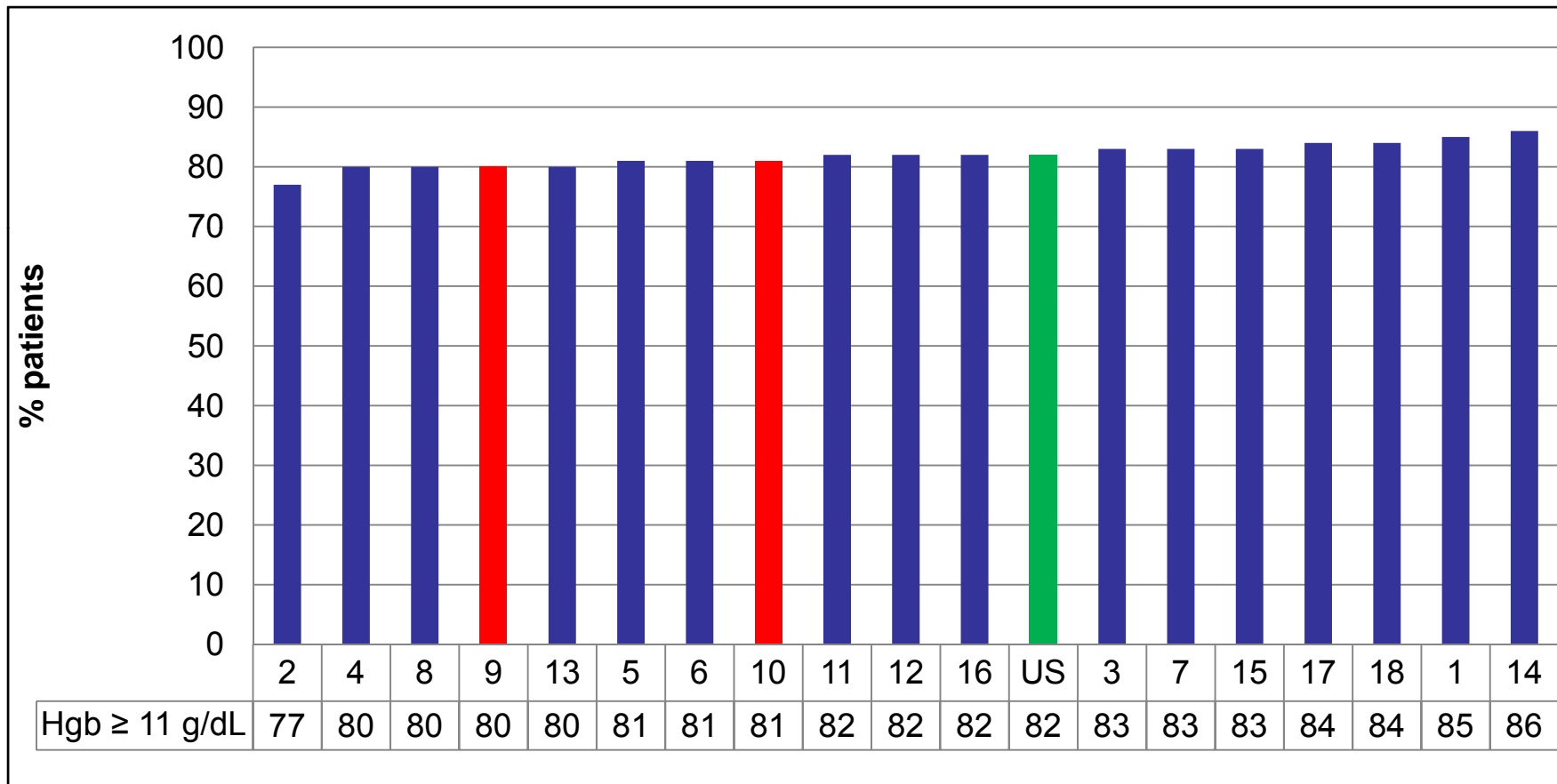
Developed by the Medical Review Board

<http://www.therenalnetwork.org/qi/anemiaMRB6.07.php>

National CPM Data Collection

% Pts with mean Hgb \geq 11g/dl

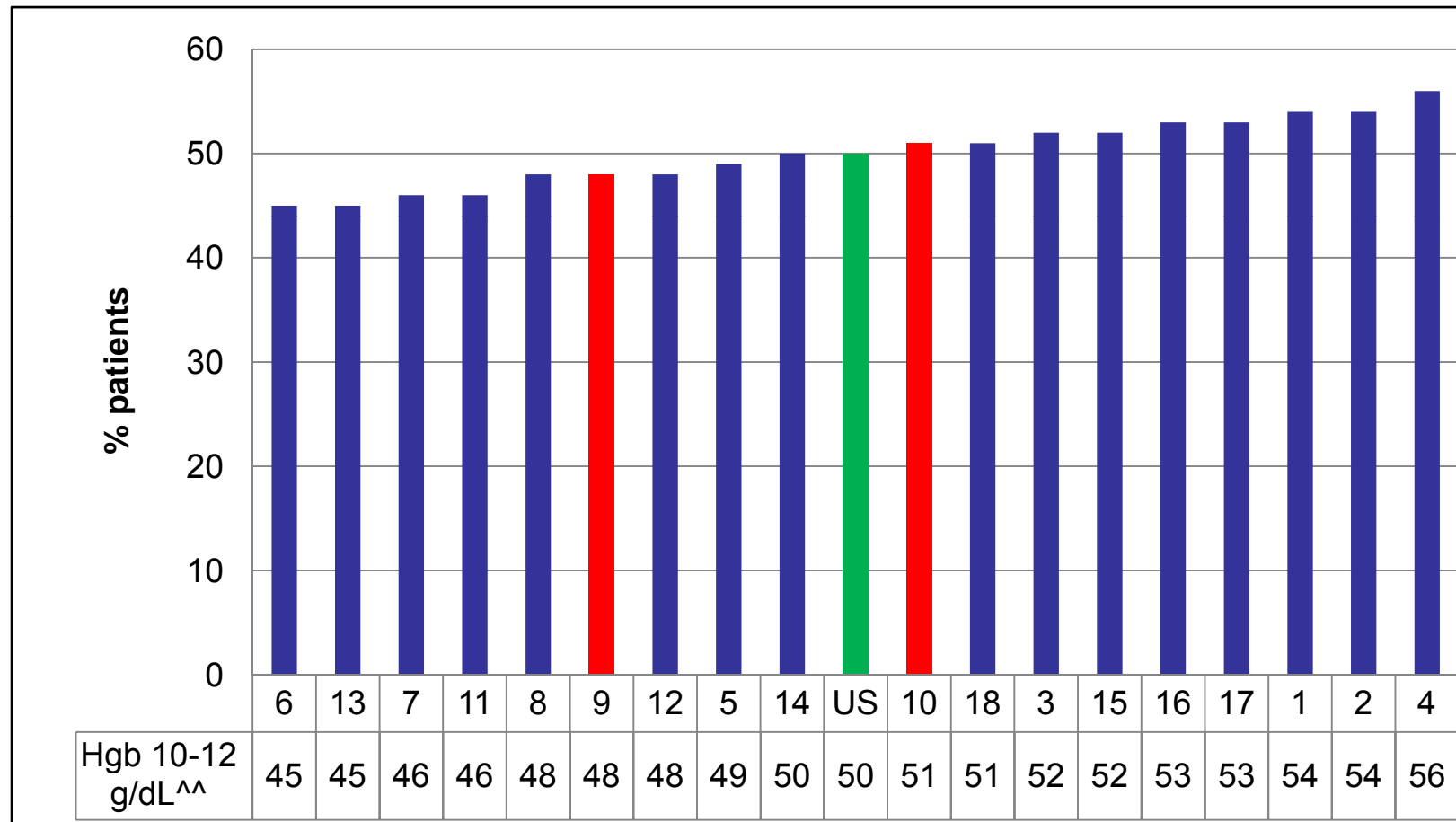
4th Quarter 2007



National CPM Data Collection

% Pts with mean Hgb 10-12

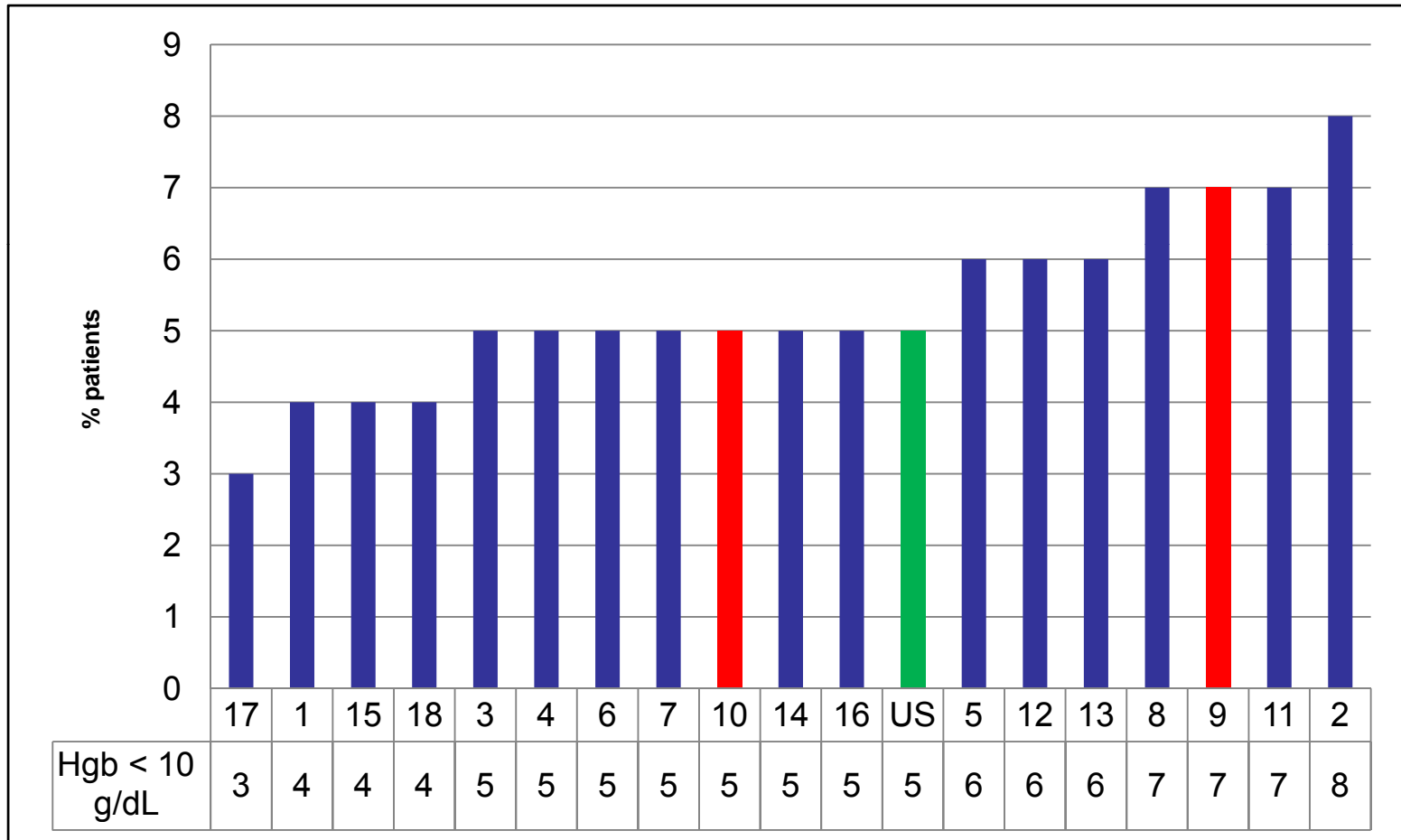
4th Quarter 2007



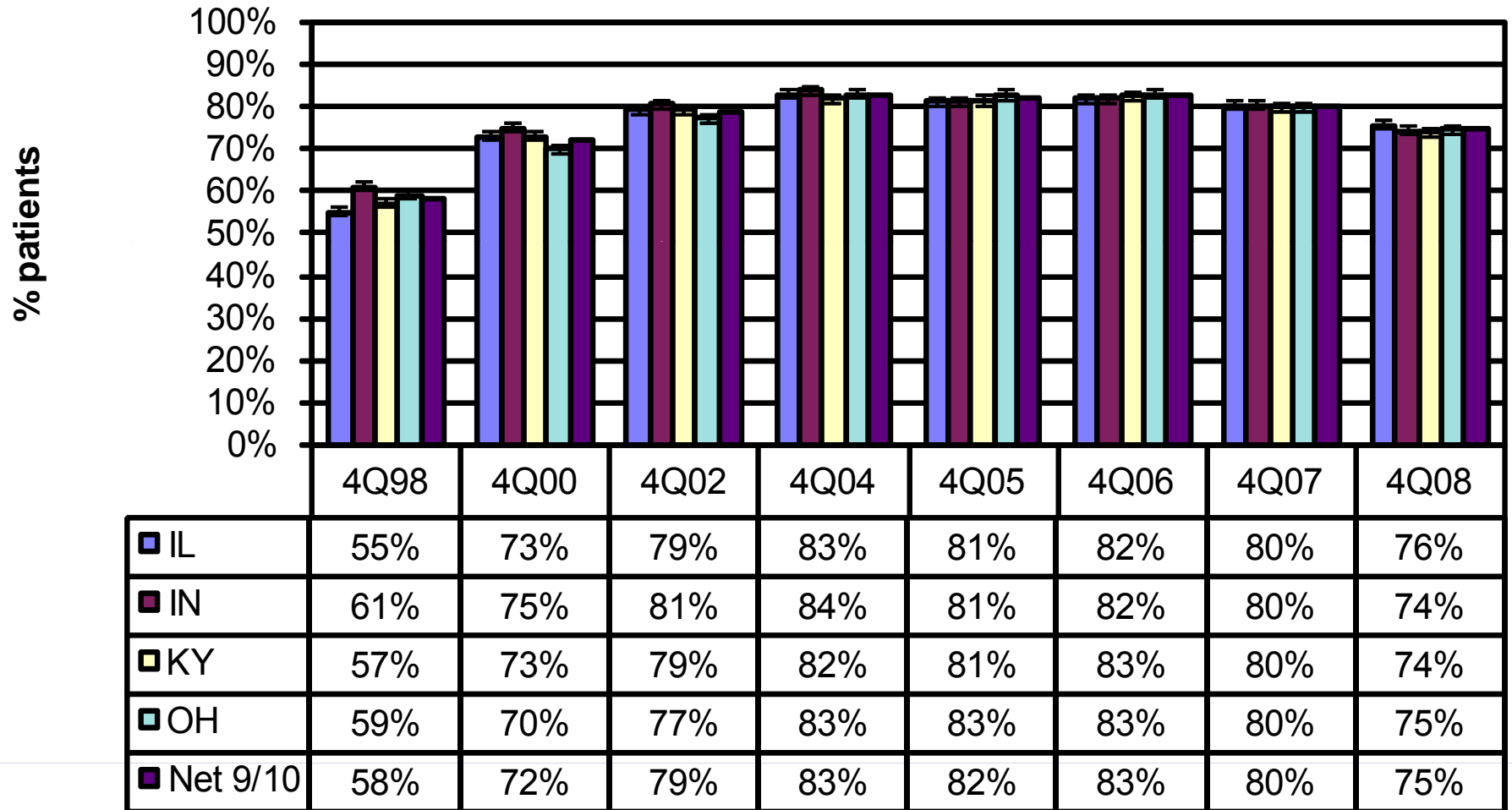
National CPM Data Collection

% Pts with mean Hgb <10g/dl

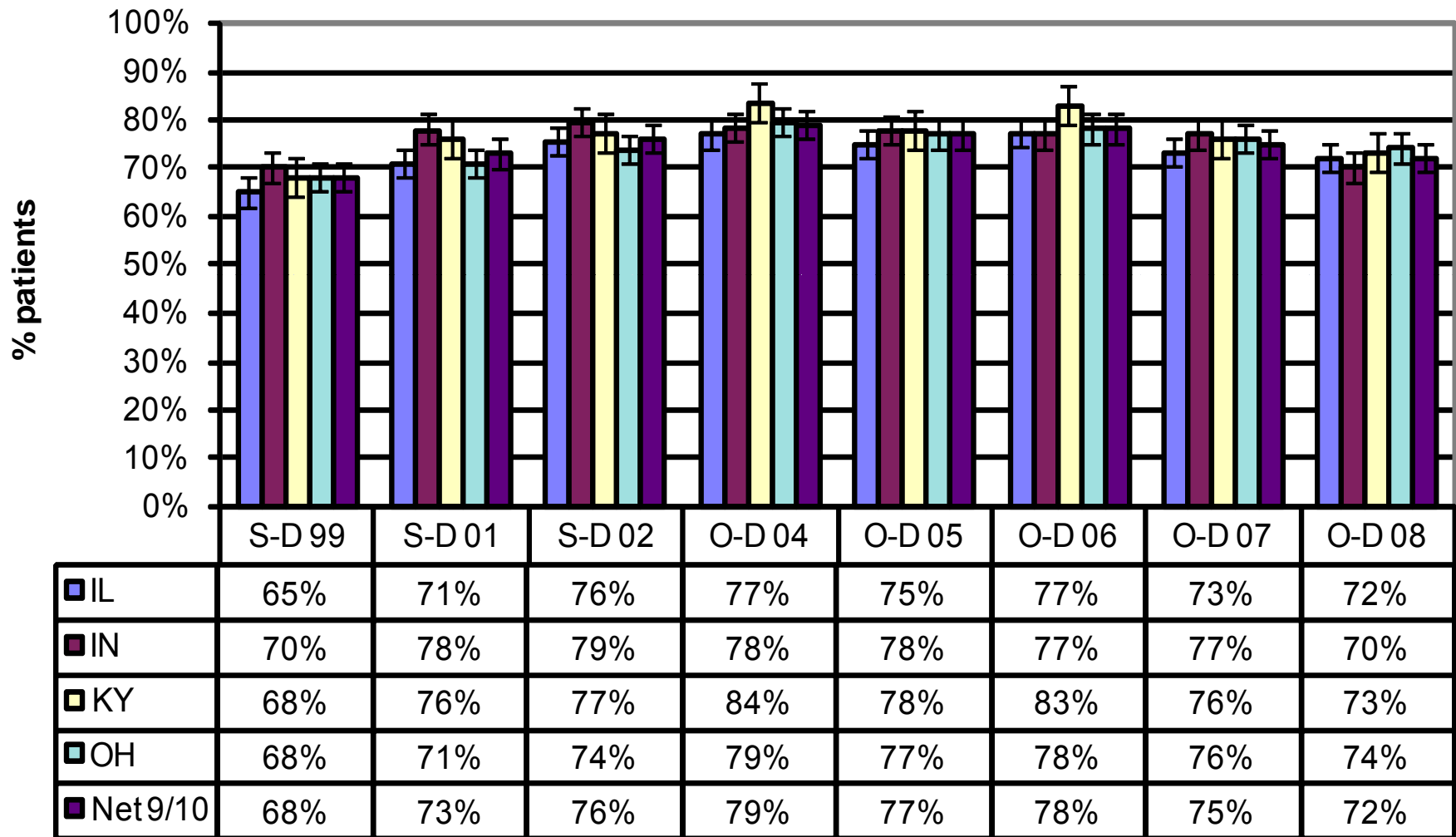
4th Quarter 2007



Percentage of HD Patients with HGB \geq 11 gm/dL by State and Network 9/10 for Selected Collection Periods



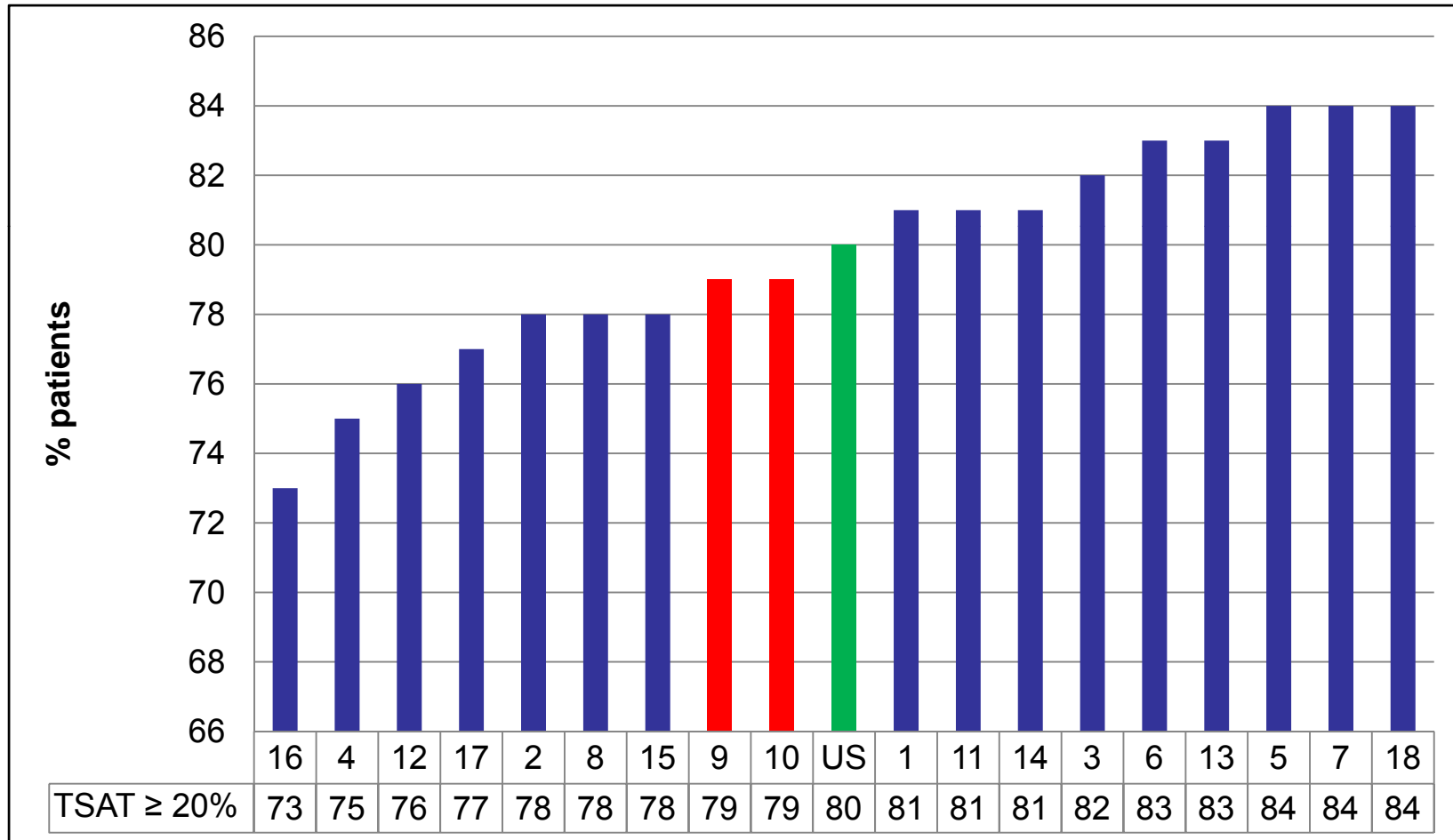
**Percentage of PD Patients with HGB \geq 11 gm/dL
by State and Network 9/10 for Selected Collection Periods**



National CPM Data Collection

% Pts with mean TSAT \geq 20%

4th Quarter 2007

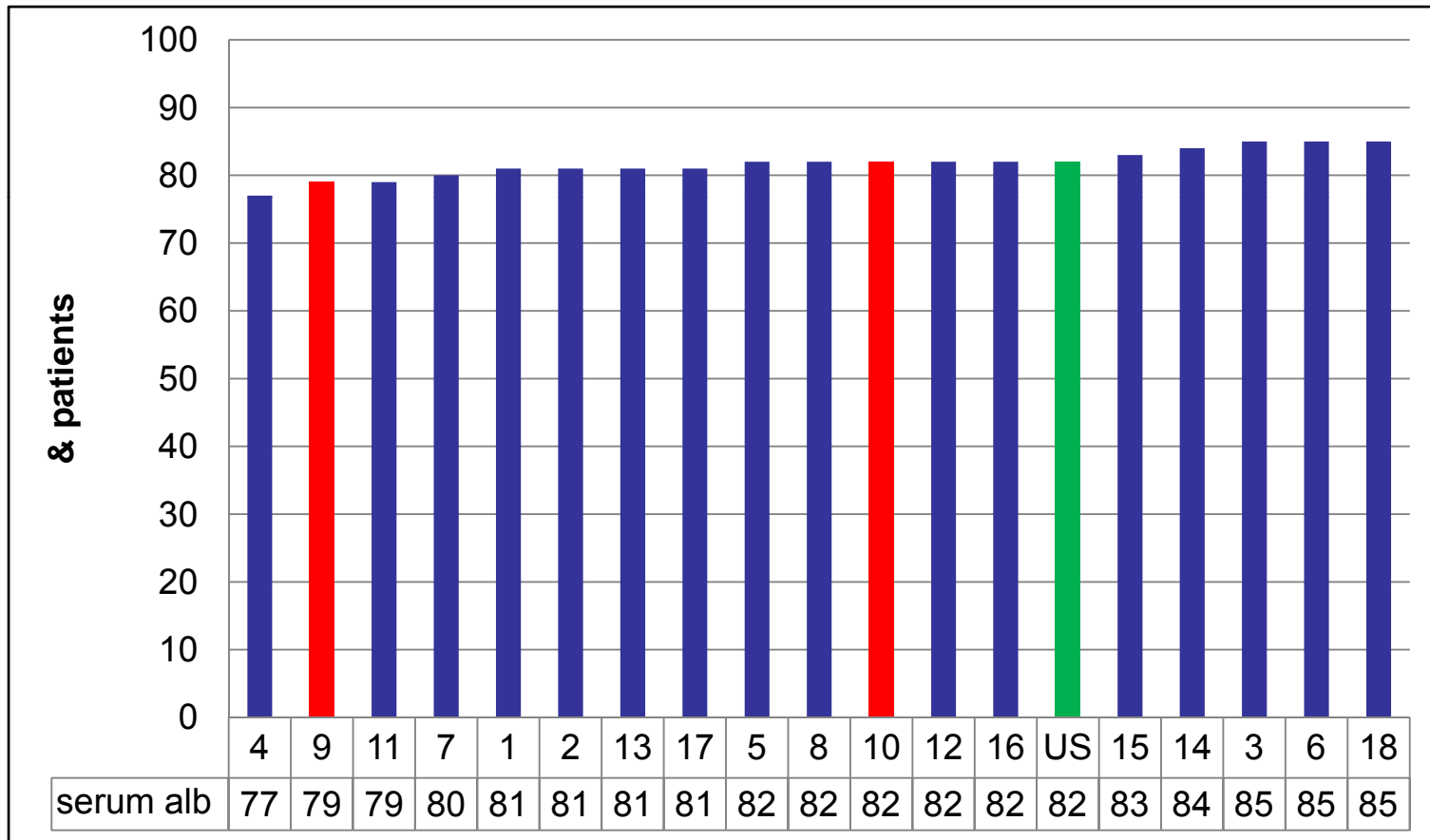


Nutrition Goal

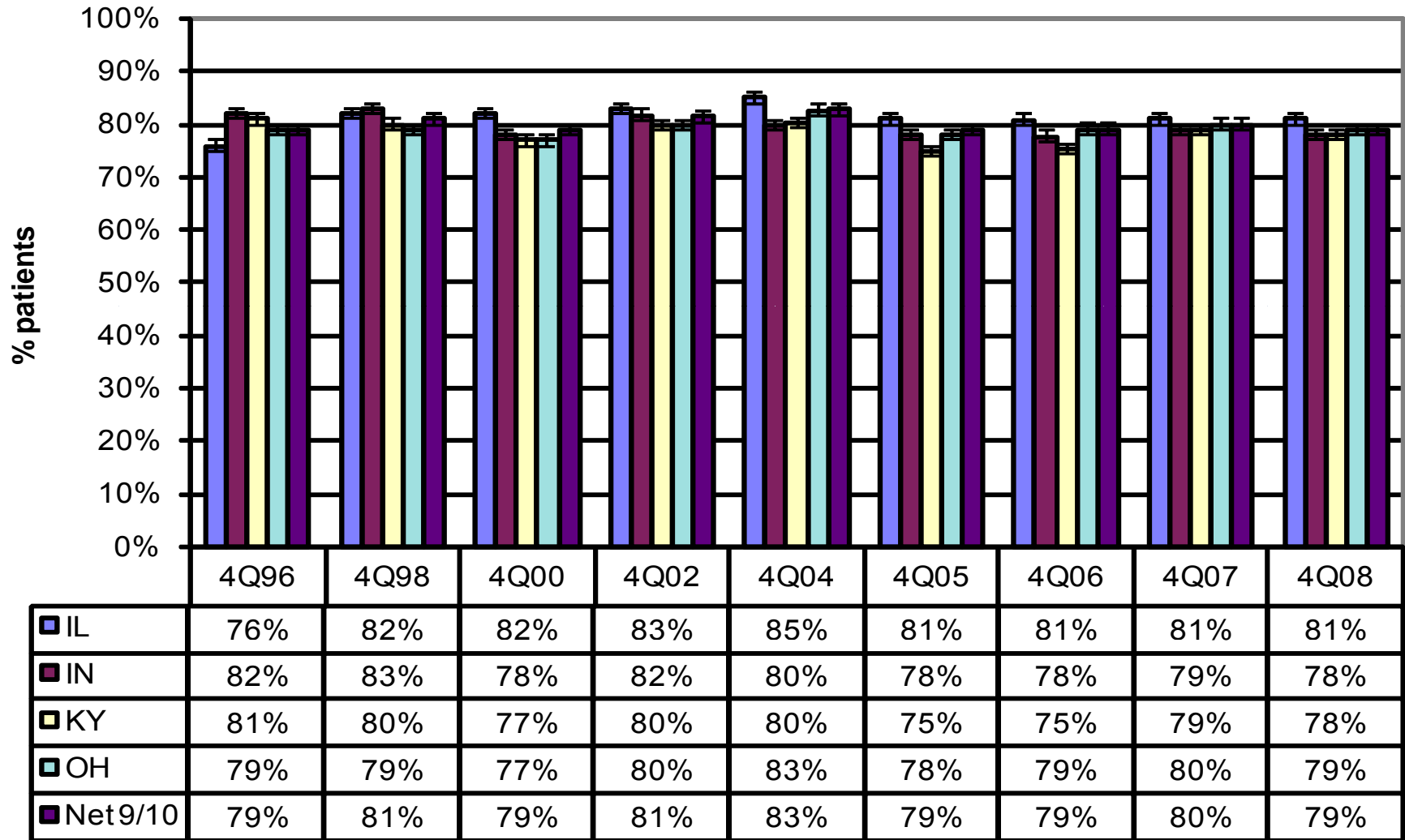
- All patients will have serum albumin measured and evaluated each month.
- A stabilized serum albumin equal to or greater than the lower limit of the normal range (approximately 3.5g/dl for bromcresol green)

National CPM Data Collection

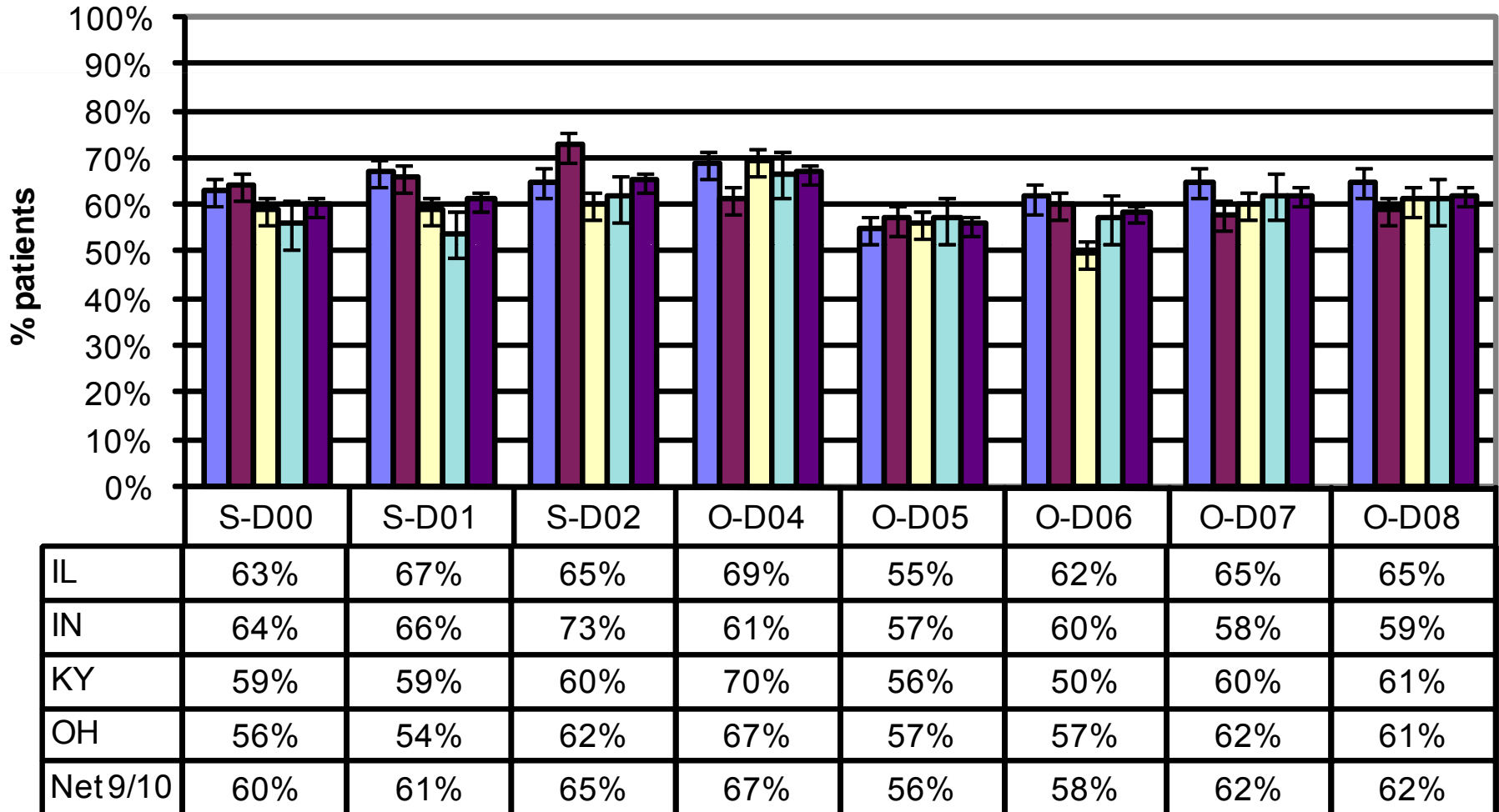
% Pts with mean serum albumin $\geq 3.5/3.2\text{g/dL}$
 (BCG/BCP)^{^^} 4th Quarter 2007



**Percentage of HD Patients with Average Albumin \geq 3.5 gm/dL
by State and Network for Selected Collection Periods**



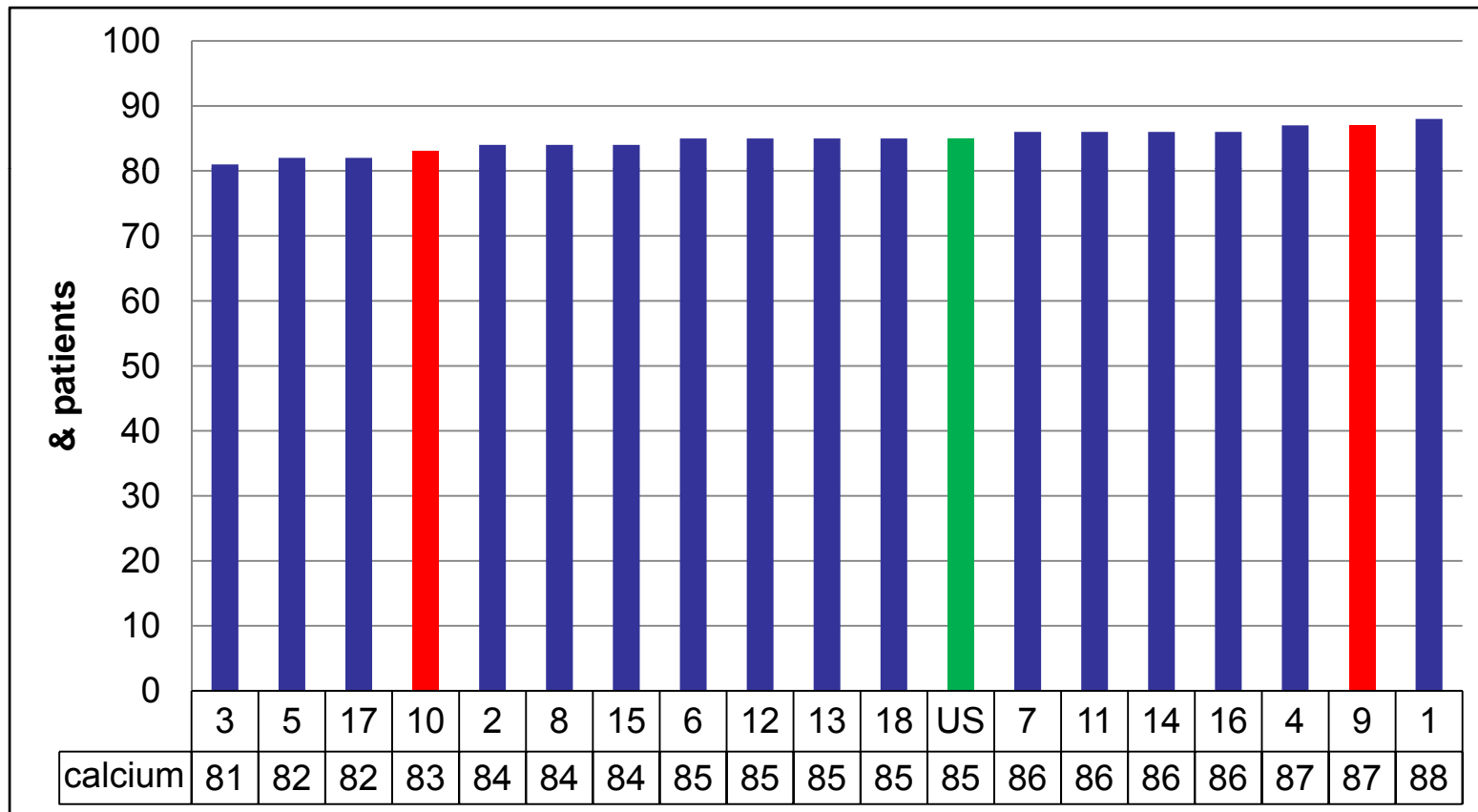
**Percentage of PD Patients with Average Albumin \geq 3.5 gm/dL
by State and Network 9/10 for Selected Collection Periods**



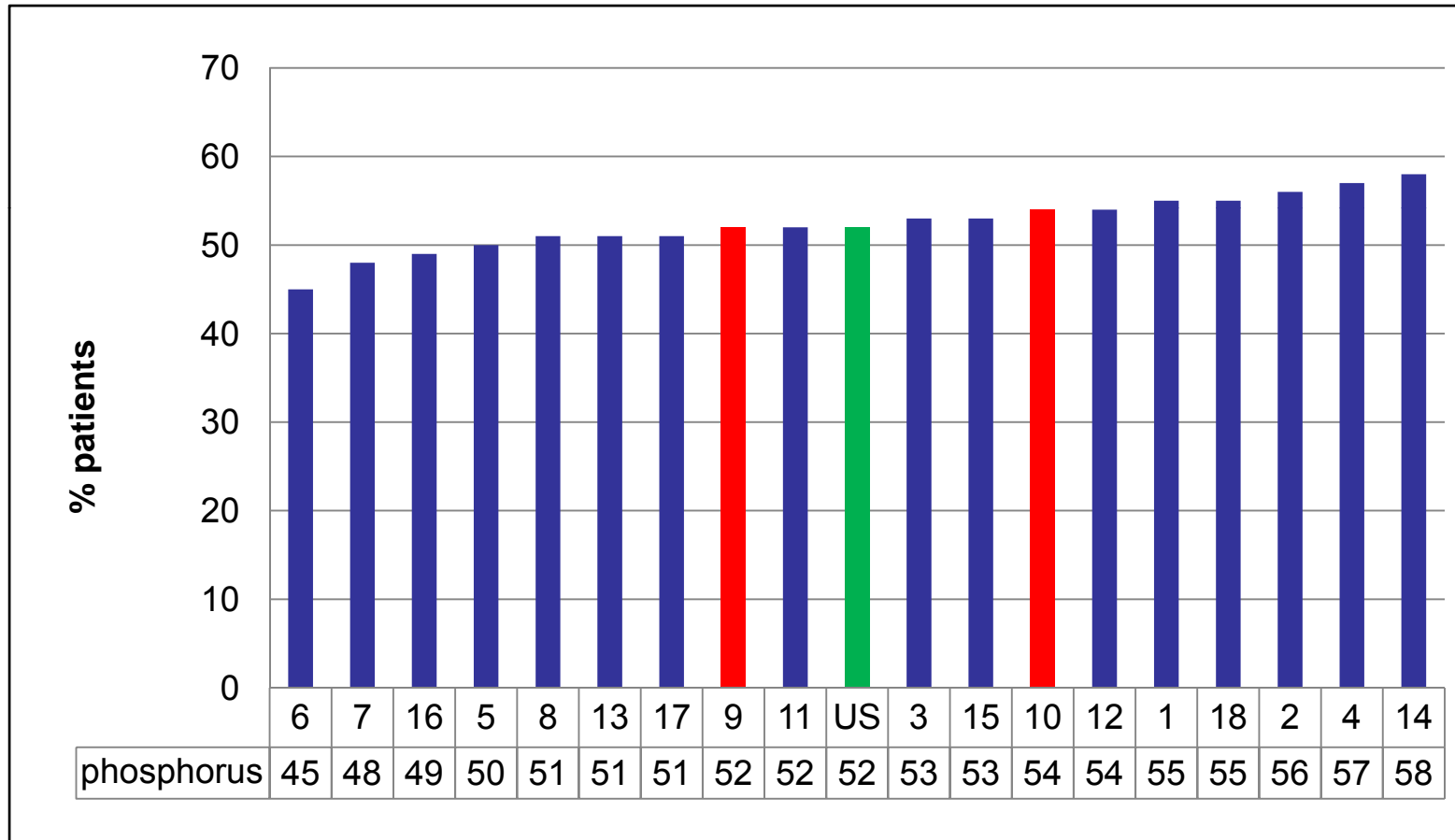
Mineral Metabolism Goals

- All patients measured for calcium & phosphorus every month
- $\geq 75\%$ of patients will have a Ca/PO_4 product of $< 55 \text{ mg}^2/\text{dL}^2$
- All patients will be measured for “intact” PTH quarterly

National CPM Data Collection
 % Patients with Adjusted Calcium
 8.4 – 10.2
 4th Quarter 2007



National CPM Data Collection
 % Patients with Mean Phosphorus
 3.5 – 5.5
 4th Quarter 2007



Network Fistula Goals 2006 – 2009

Prevalent AV fistula goals for each year in
each Network

Network 9

Dec '06 rate =	42.0%
2007 Goal =	50.0%
2008 Goal =	58.0%
2009 Goal =	66.0%

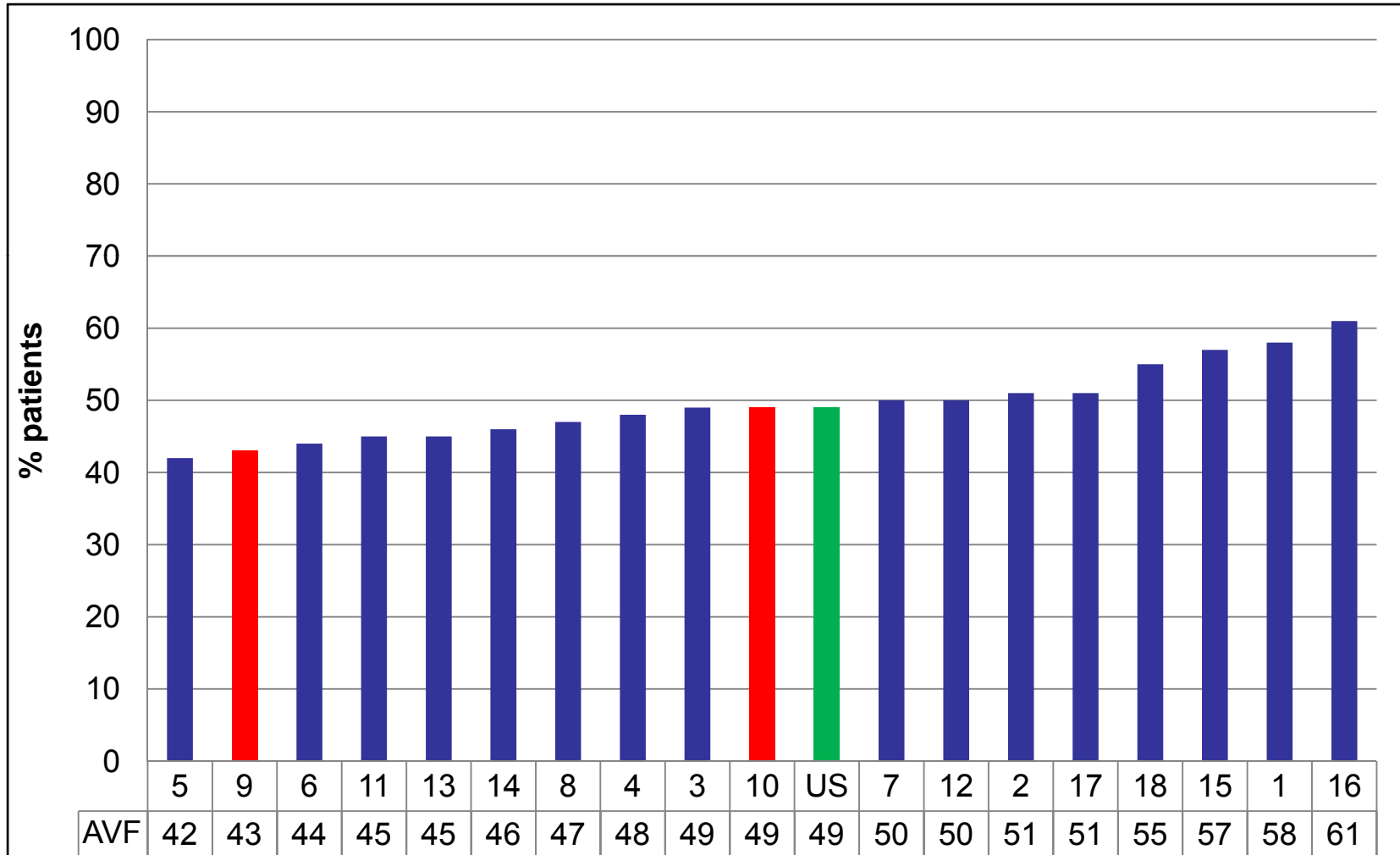
Network 10

Dec '06 rate =	42.6%
2007 Goal =	50.0%
2008 Goal =	58.0%
2009 Goal =	66.0%

National CPM Data Collection

% Prevalent Pts with AVF

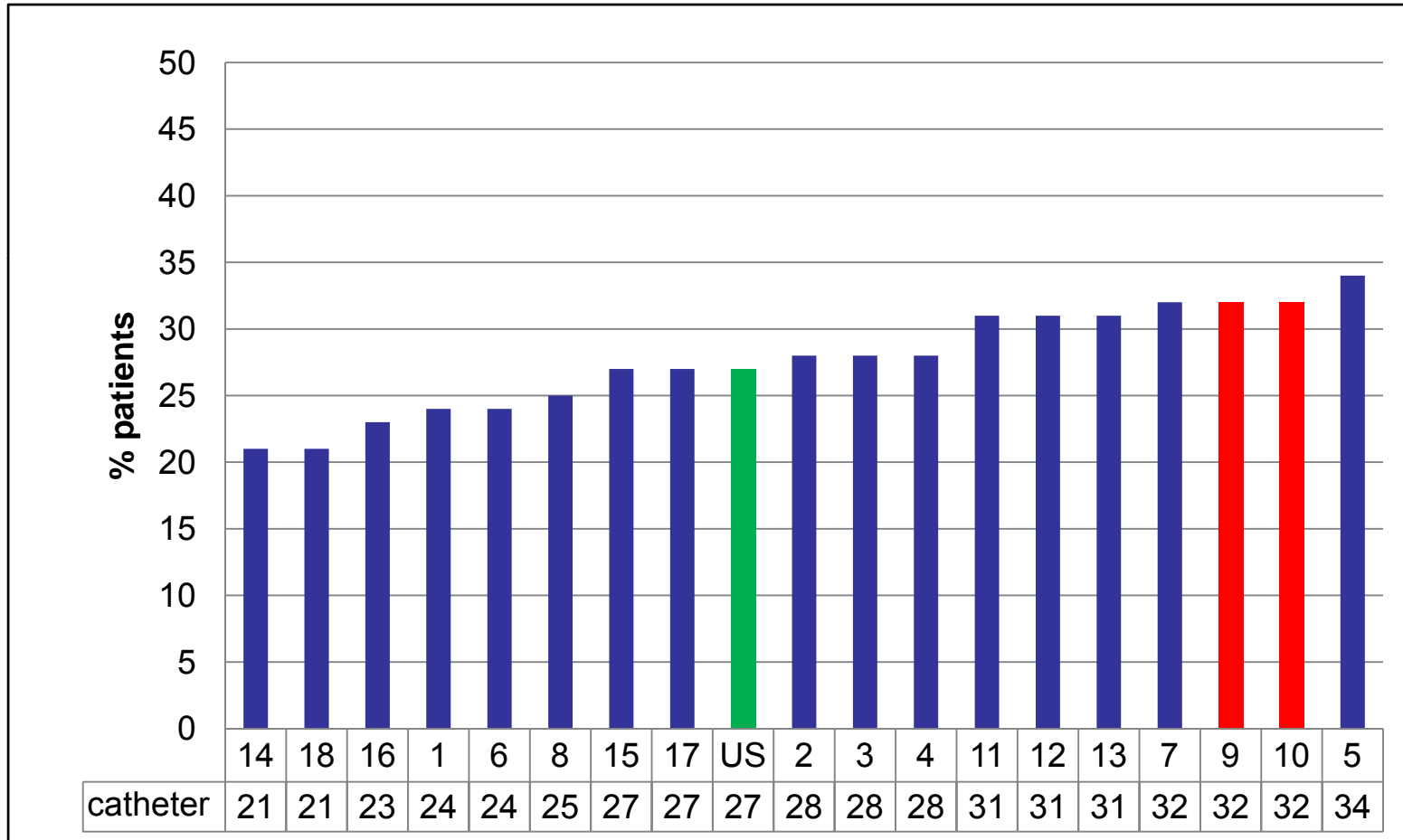
4th Quarter 2007



National CPM Data Collection

% Prevalent Pts with Catheter

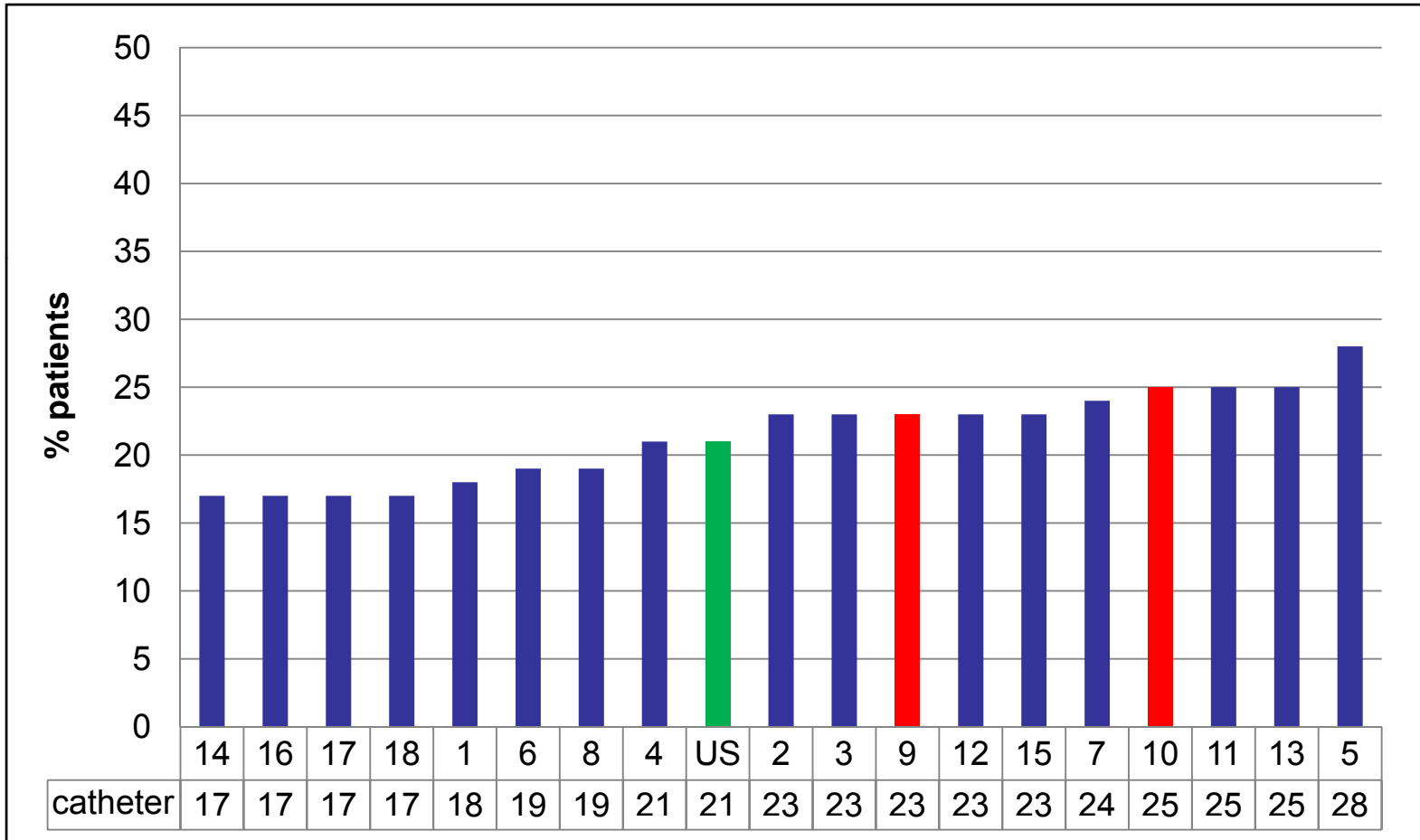
4th Quarter 2007



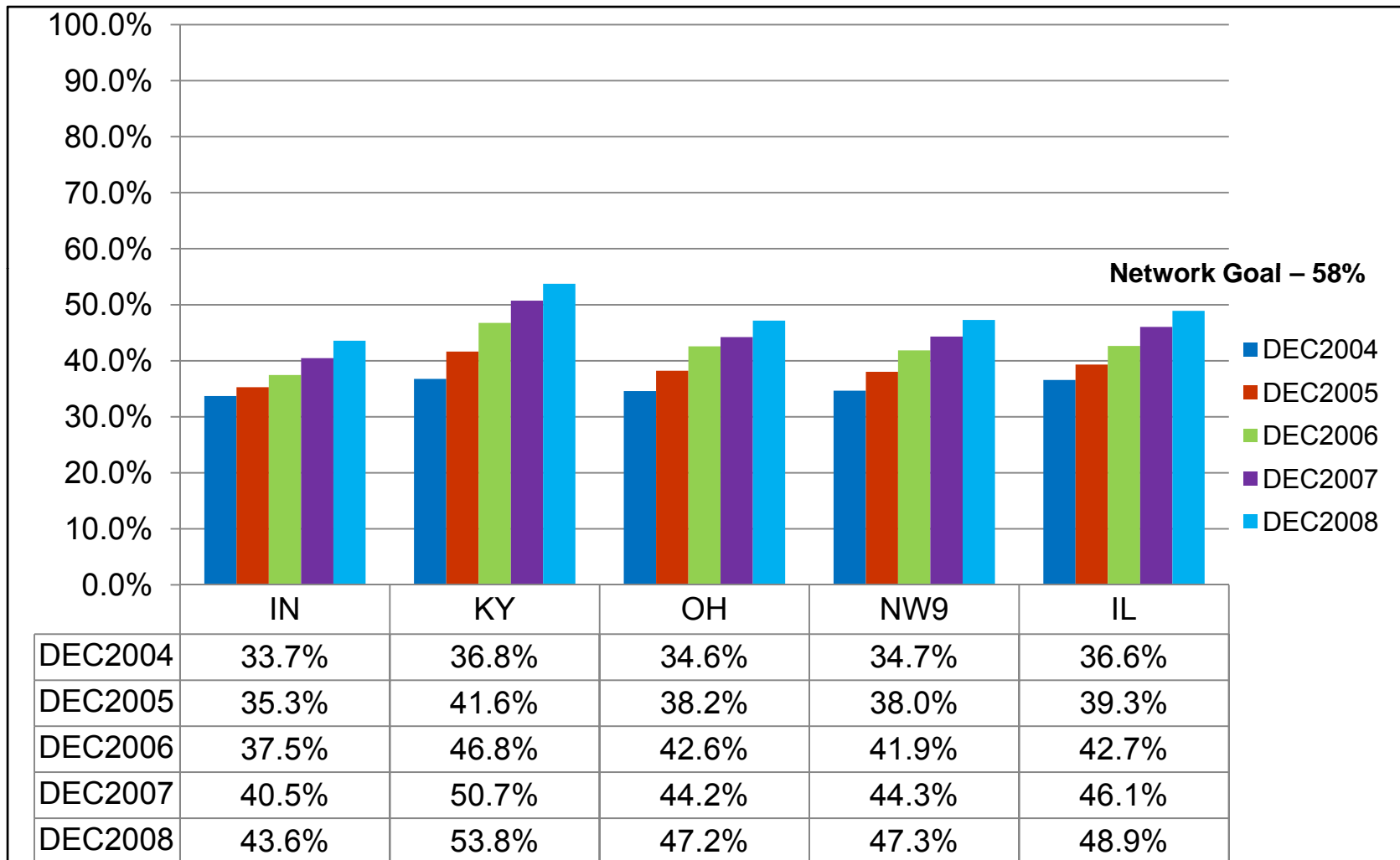
National CPM Data Collection

% Prevalent Pts with Catheter \geq 90 Days

4th Quarter 2007



% Prevalent Patients Using a Fistula by State & Network



% Prevalent Patients Using a Catheter by State & Network

