

# Hemodialysis Adequacy Goal

95% or More Patients Achieve a

URR of  $\geq 65\%$

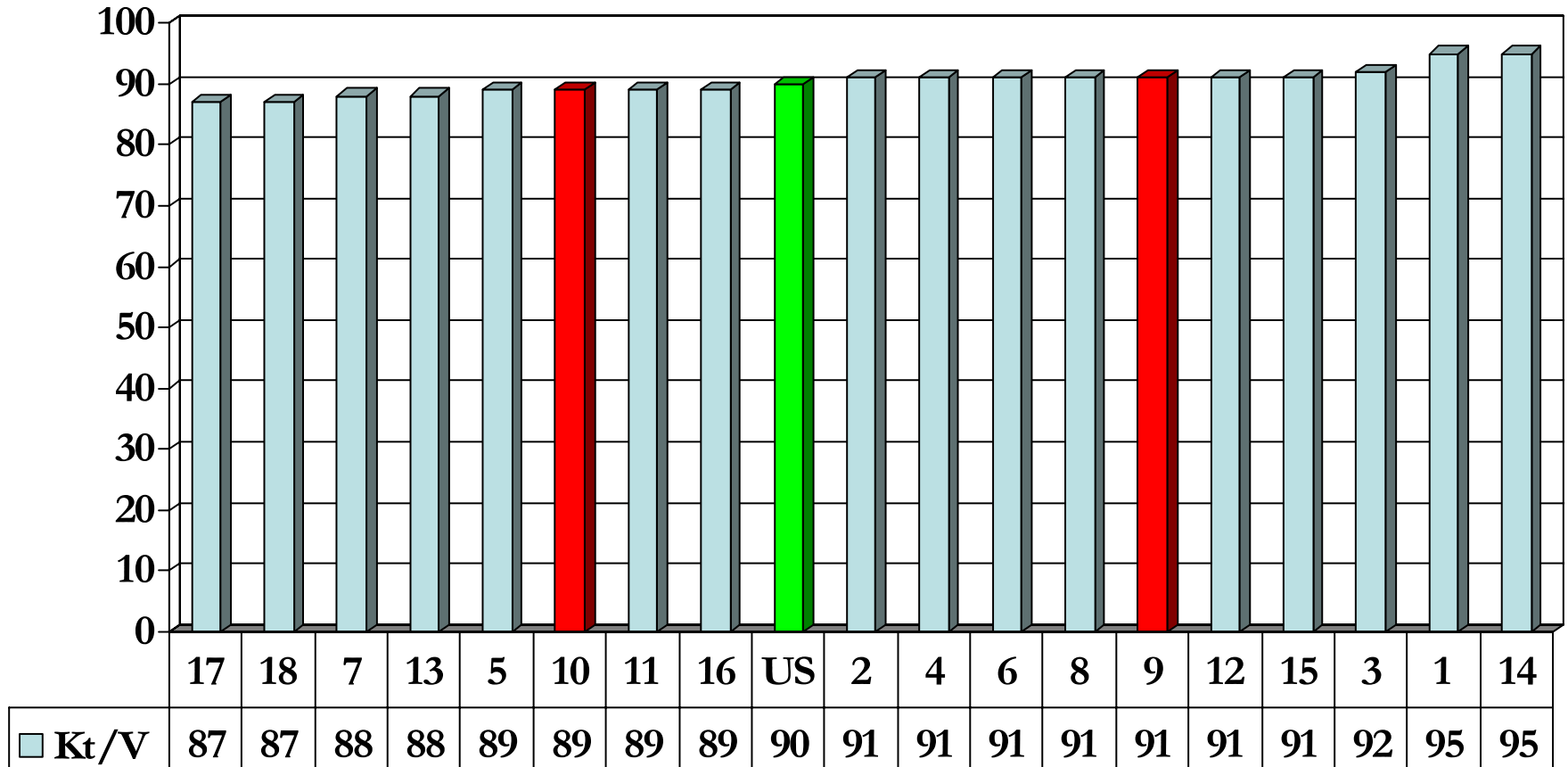
And

a Kt/V of  $\geq 1.2$

# National CPM Data Collection

## % Patients with $Kt/V \geq 1.2$

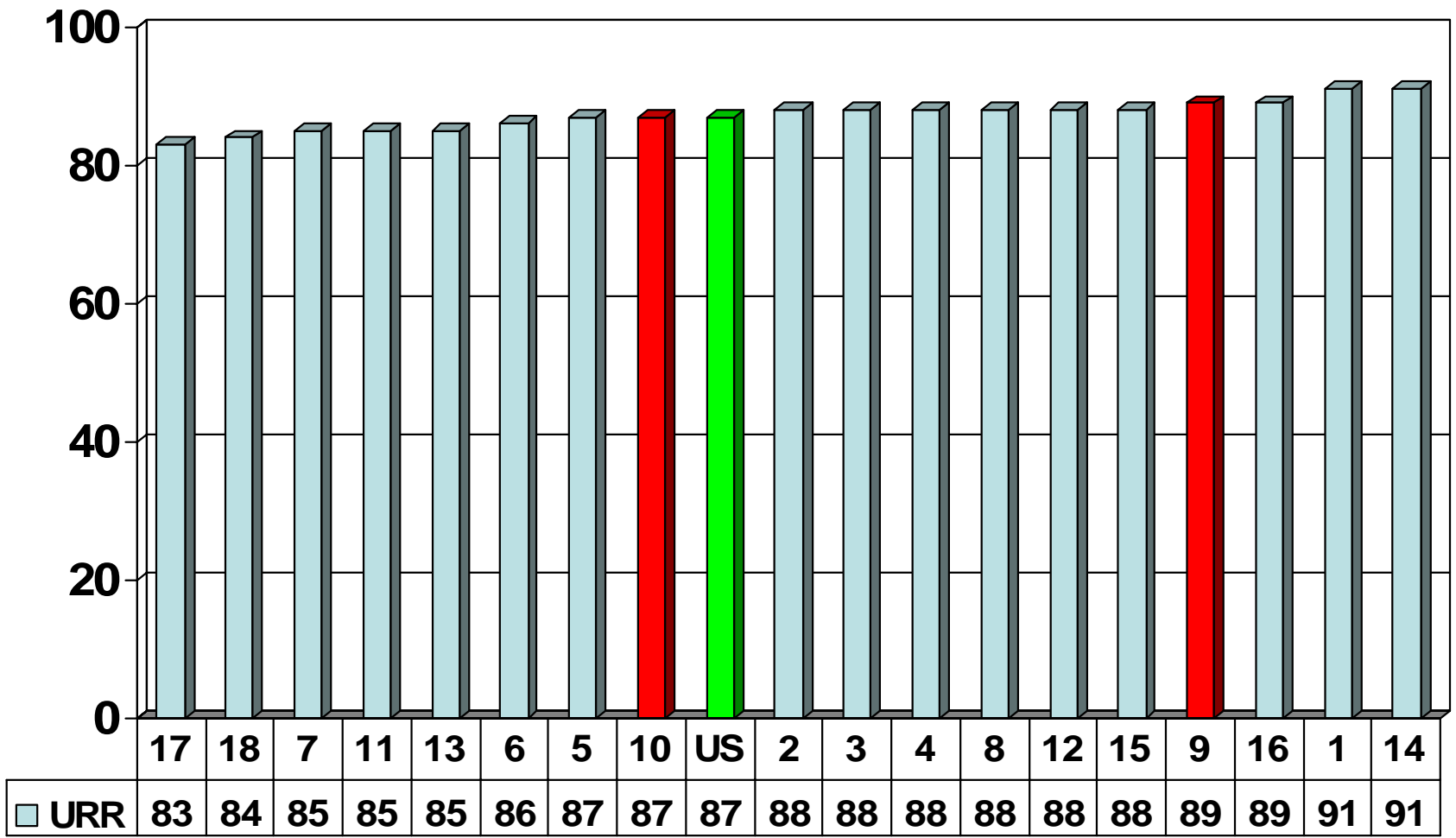
### 4<sup>th</sup> Quarter 2006



# National CPM Data Collection

## % Patients with URR $\geq$ 65%

### 4<sup>th</sup> Quarter 2006



# Anemia Management Goal

Goal has been replaced by –

“A Statement on the Use of ESA in CKD Patients Requiring Dialysis”

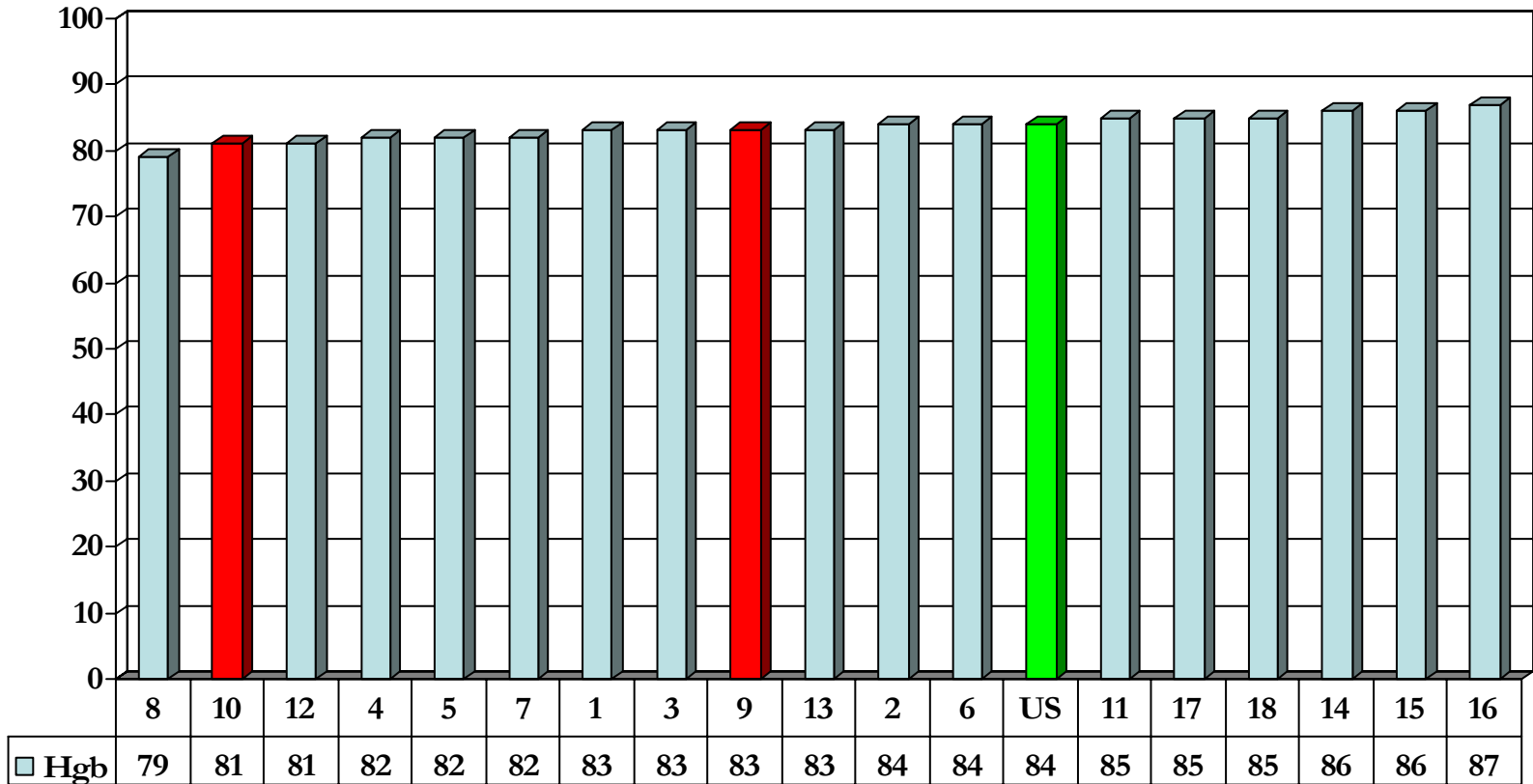
Developed by the Medical Review Board

[www.therenalnetwork.org](http://www.therenalnetwork.org)

# National CPM Data Collection

## % Pts with mean Hgb $\geq$ 11g/dl

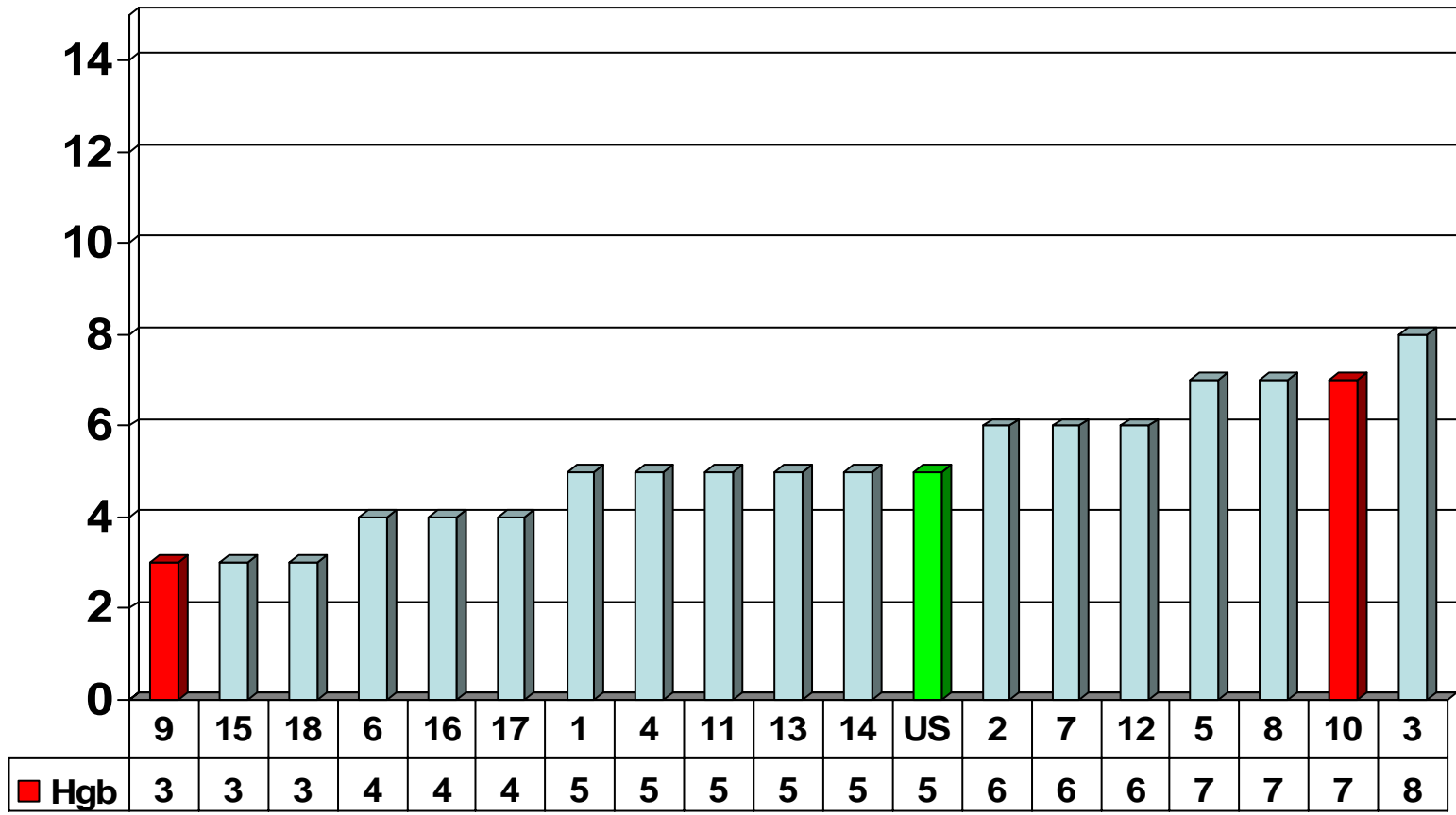
### 4<sup>th</sup> Quarter 2006



# National CPM Data Collection

## % Pts with mean Hgb <10g/dl

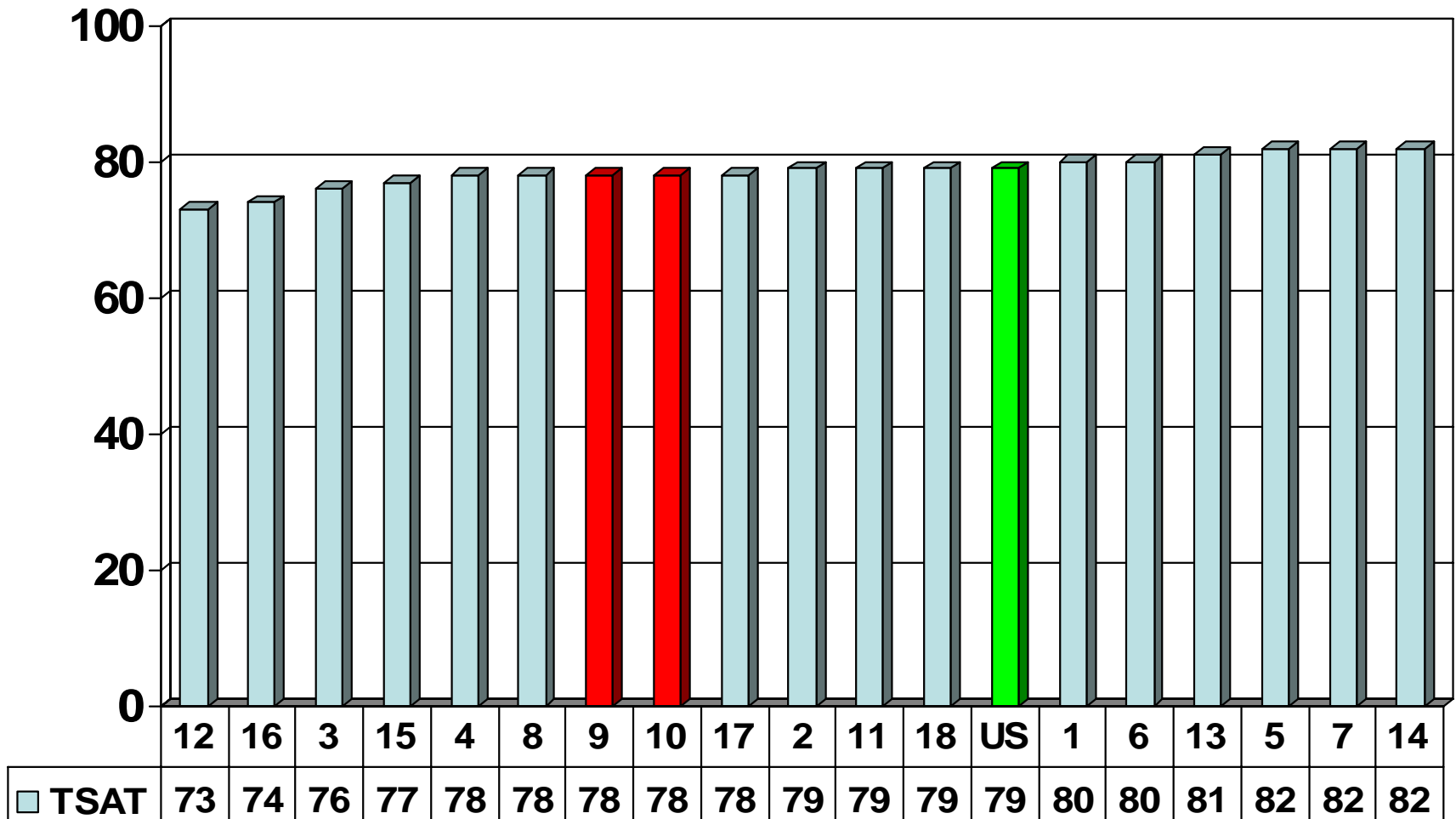
### 4<sup>th</sup> Quarter 2006



# National CPM Data Collection

## % Pts with mean TSAT $\geq 20\%$

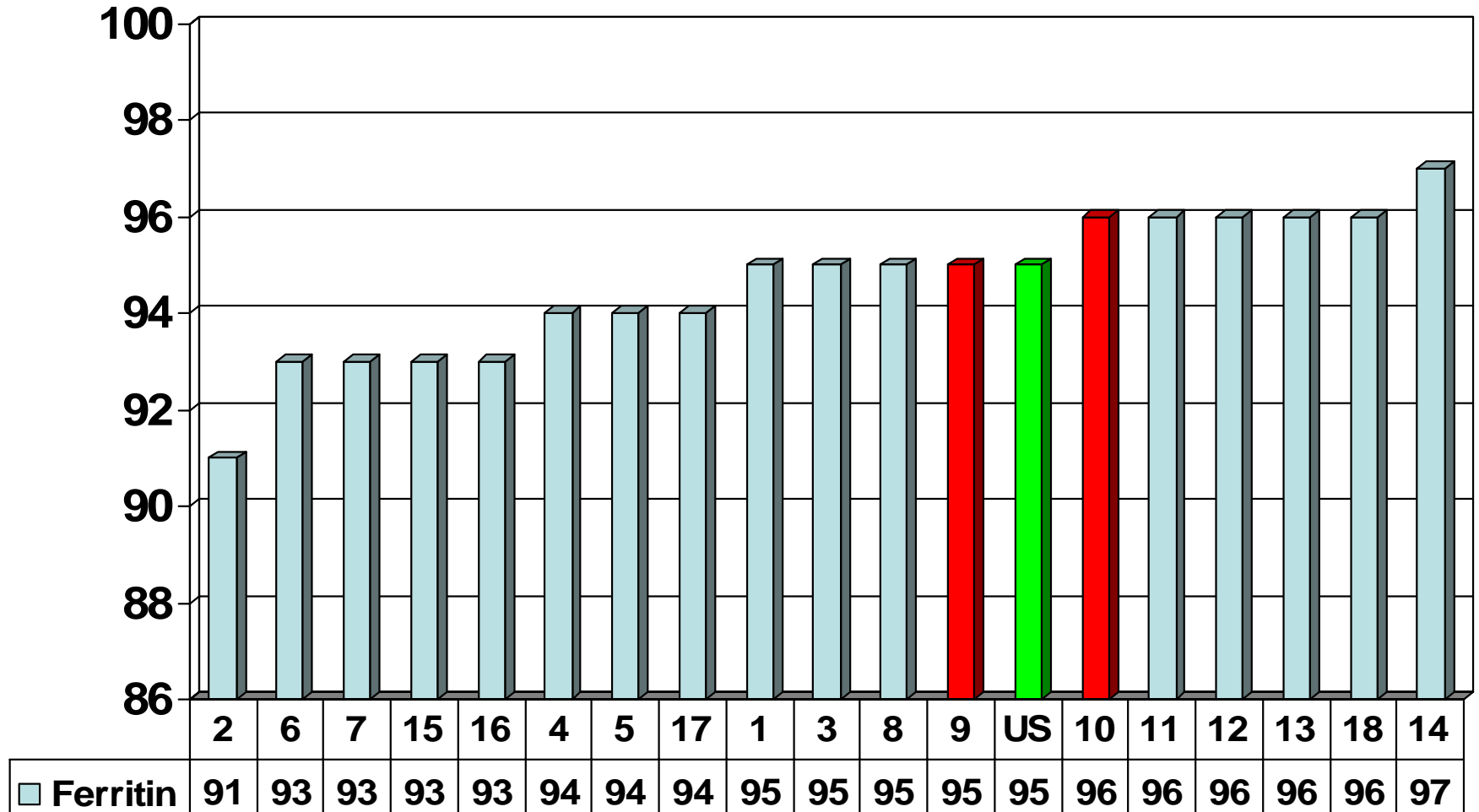
### 4<sup>th</sup> Quarter 2006



# National CPM Data Collection

## % Pts with mean Ferritin $\geq$ 100 ng/mL

### 4<sup>th</sup> Quarter 2006



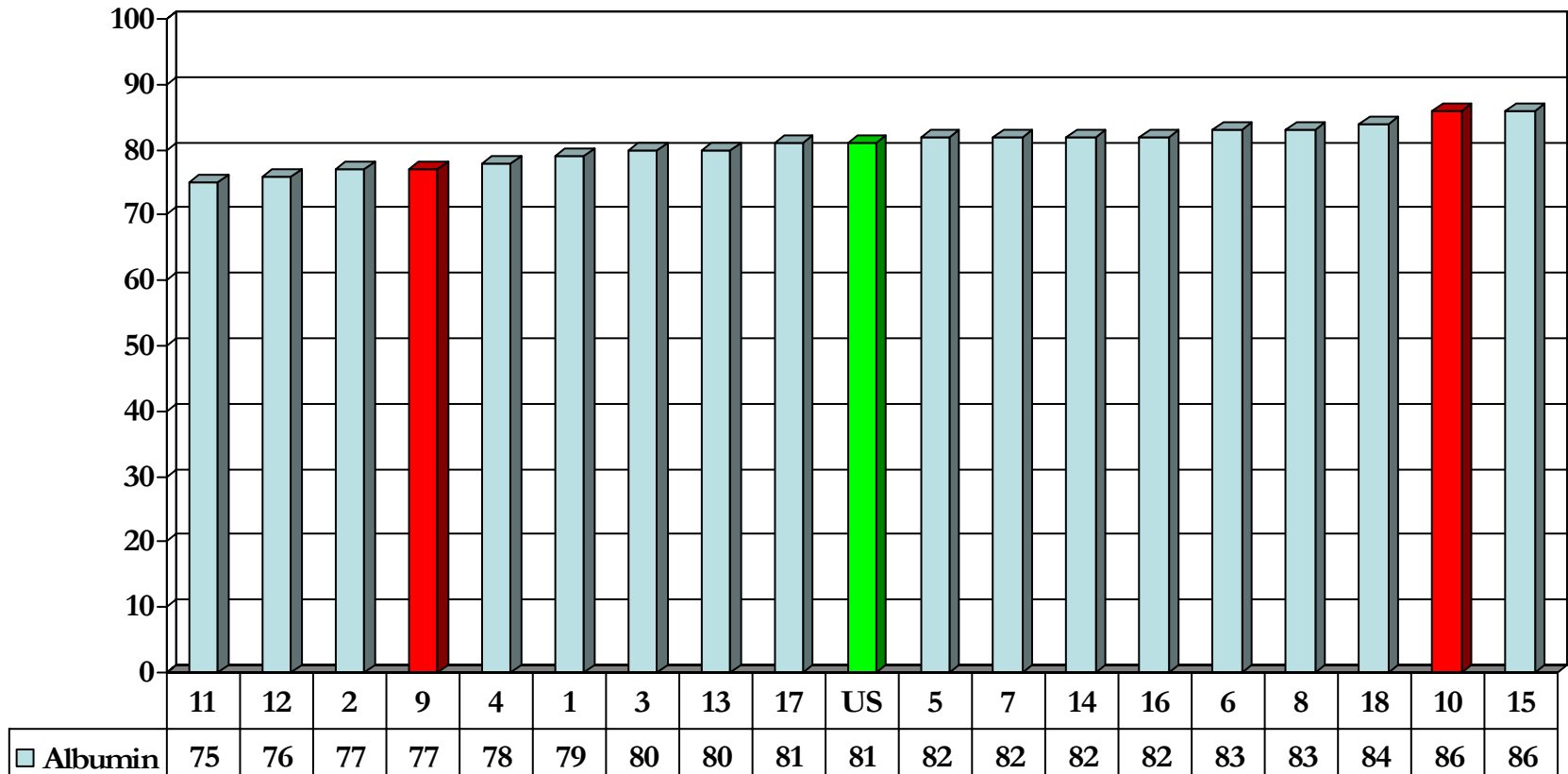
# Nutrition Goal

All patients will have serum albumin measured and evaluated each month.

A stabilized serum albumin equal to or greater than the lower limit of the normal range (approximately 3.5g/dl for bromcresol green)

# National CPM Data Collection

% Pts with mean serum albumin  $\geq 3.5/3.2$  g/dl  
4<sup>th</sup> Quarter 2006



# Mineral Metabolism Goals

All patients measured for calcium & phosphorus every month

≥ 75% of patients will have a Ca/PO<sub>4</sub> product of

< 55 mg<sup>2</sup>/dL<sup>2</sup>

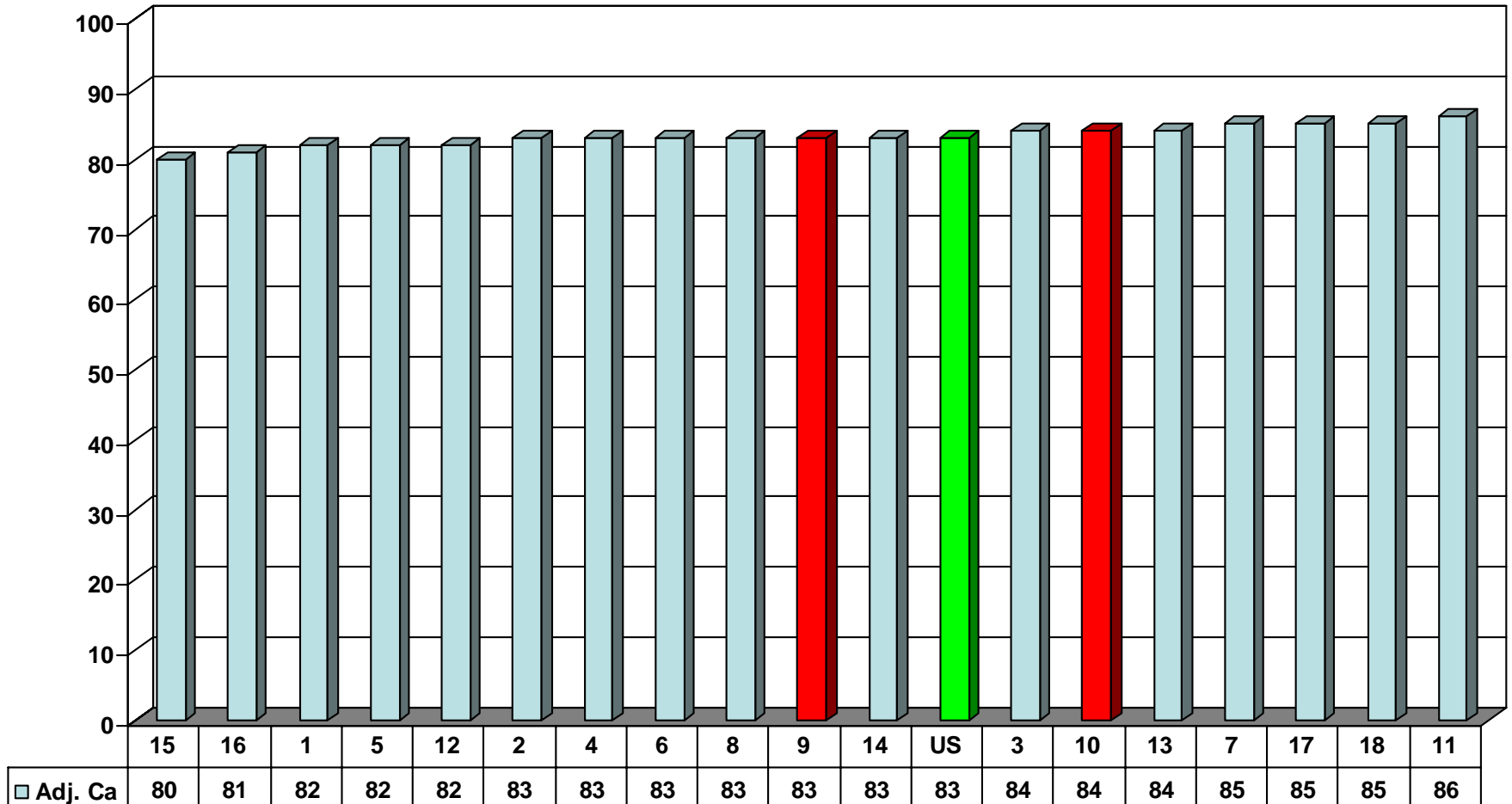
All patients will be measured for “intact” PTH quarterly

# National CPM Data Collection

## % Patients with Adjusted Calcium

### 8.4 – 10.2

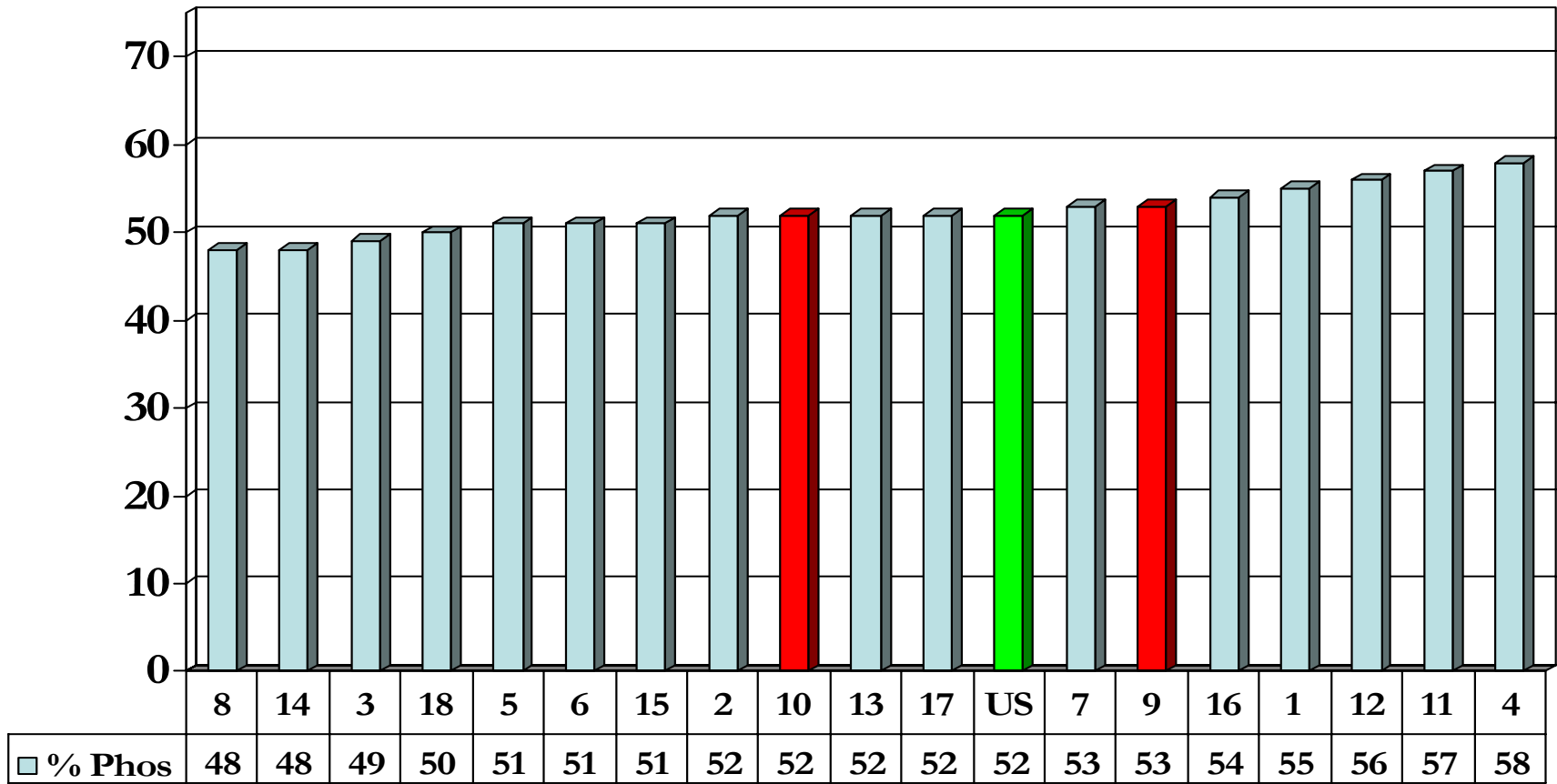
### 4<sup>th</sup> Quarter 2006



# National CPM Data Collection

## % Patients with Mean Phosphorus 3.5 – 5.5

### 4<sup>th</sup> Quarter 2006



# Network Fistula Goals 2006 – 2009

Prevalent AV fistula goals for each year in  
each Network

## Network 9

**Dec '06 rate = 42.0%**  
**2007 Goal = 50.0%**  
**2008 Goal = 58.0%**  
**2009 Goal = 66.0%**

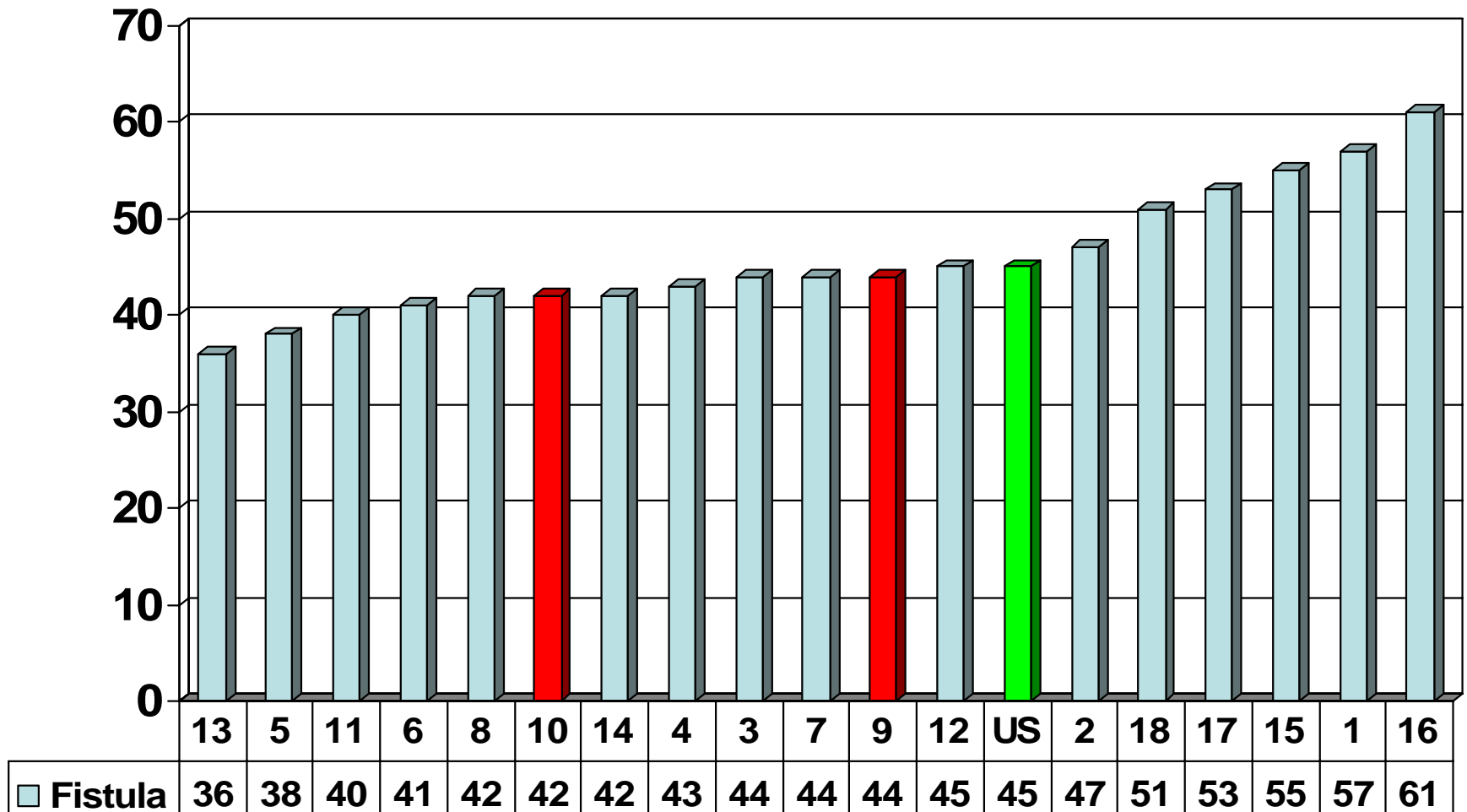
## Network 10

**Dec '06 rate = 42.6%**  
**2007 Goal = 50.0%**  
**2008 Goal = 58.0%**  
**2009 Goal = 66.0%**

# National CPM Data Collection

## % Prevalent Pts with AVF

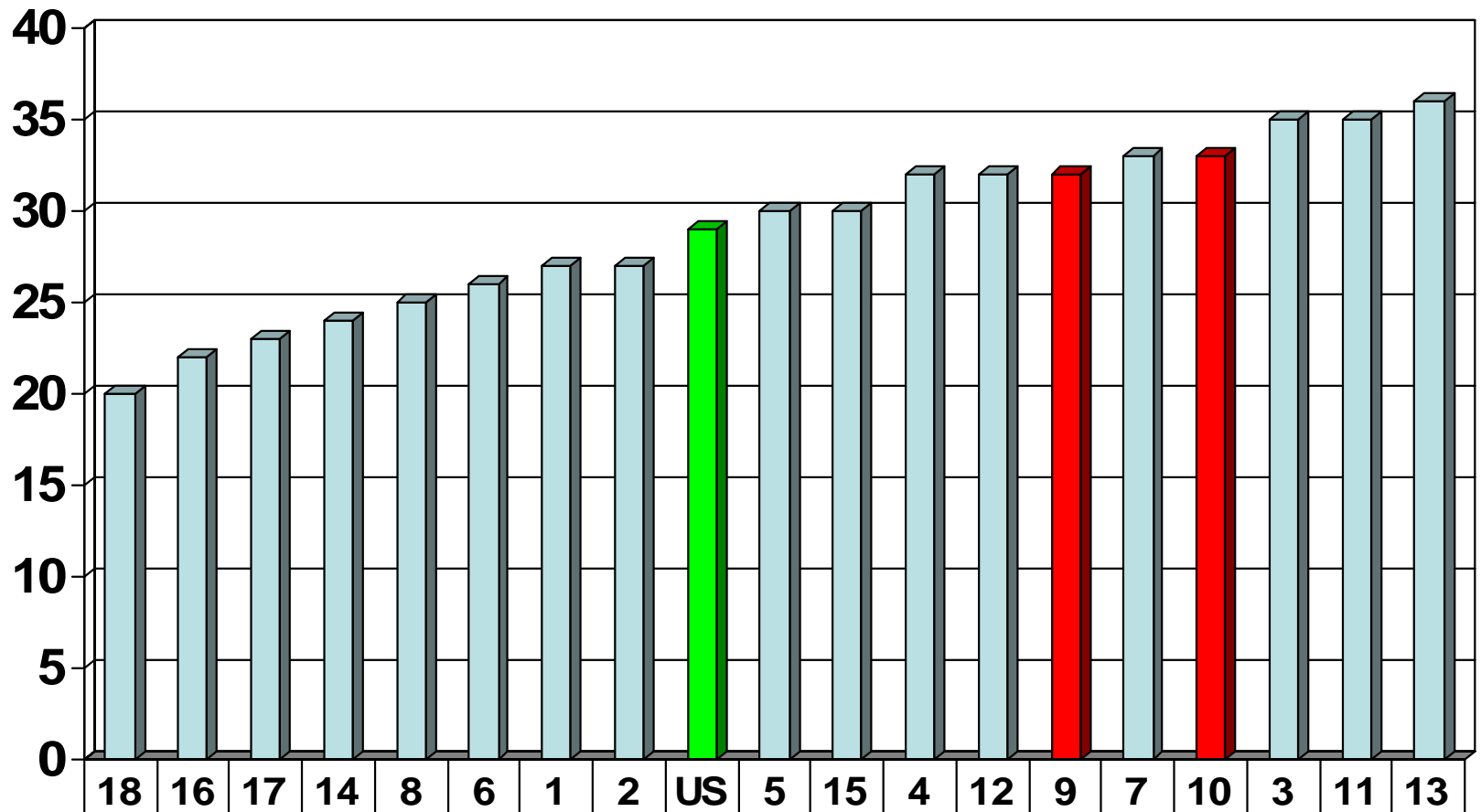
### 4<sup>th</sup> Quarter 2006



# National CPM Data Collection

## % Prevalent Pts with Catheter

### 4<sup>th</sup> Quarter 2006



■ Catheter	20	22	23	24	25	26	27	27	29	30	30	32	32	32	33	33	35	35	36
------------	----	----	----	----	----	----	----	----	----	----	----	----	----	----	----	----	----	----	----